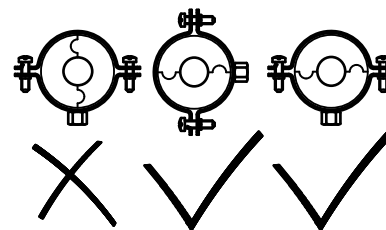
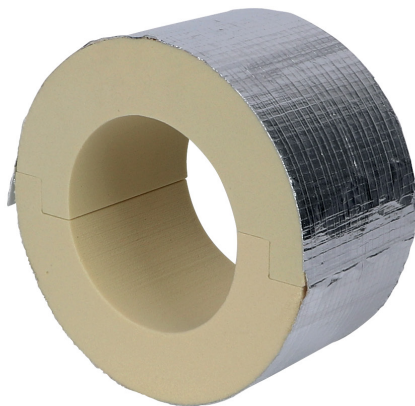


BISOFIX[®] PIR40

for insulated pipes 12.0 - 406.4 mm

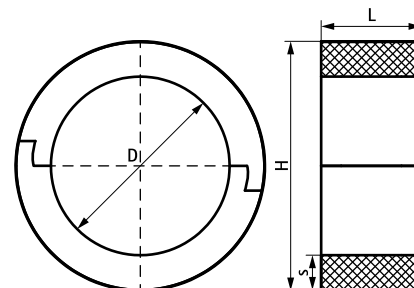
(D 03 70)



Features and Benefits

- for combination with rigid foam insulation
- cover joints with aluminium tape
- does not contain CFC, HCFC, formaldehyde or cadmium
- fire class B2
- PIR density for $D < 110\text{mm}$ = 80kg/m^3
- PIR density for $D > 110\text{mm}$ = 120kg/m^3
- thermal conductivity λ (approx. value): 0.30 W/(mK)
- temperature range $-45\text{ }^\circ\text{C}$ - $+105\text{ }^\circ\text{C}$

Part No.	D (mm)	D (°)	DN	L	H (mm)	s (mm)	F _{a,z} (N)	Pack 1
I40000012	12.0	-	-	75 mm	92.0	40.0	300	25
I40000015	15.0 - 16.0	-	-	75 mm	95.0	40.0	320	25
I40000018	17.2 - 18.0	3/8	10	75 mm	98.0	40.0	340	25
I40000020	20.0	-	-	75 mm	100.0	40.0	340	25
I40000022	21.3 - 22.0	1/2	15	75 mm	102.0	40.0	350	25
I40000025	25.0	-	-	75 mm	105.0	40.0	350	25
I40000028	26.9 - 28.0	3/4	20	75 mm	108.0	40.0	350	25
I40000032	32.0	-	-	75 mm	112.0	40.0	370	25
I40000034	33.7 - 35.0	-	-	75 mm	115.0	40.0	370	25
I40000040	40.0	-	-	75 mm	120.0	40.0	400	25
I40000042	42.4	1 1/4	32	75 mm	122.4	40.0	410	25
I40000048	48.3	1 1/2	40	75 mm	128.3	40.0	430	25
I40000054	54.0	-	-	75 mm	134.0	40.0	440	25
I40000057	56.0 - 57.0	-	-	75 mm	137.0	40.0	460	25
I40000060	60.3	2	50	75 mm	140.3	40.0	470	25
I40000064	64.0	-	-	75 mm	144.0	40.0	490	25
I40000070	70.0	-	-	75 mm	150.0	40.0	510	15
I40000076	76.1	2 1/2	65	75 mm	156.1	40.0	530	15
I40000089	88.9	3	80	75 mm	168.9	40.0	620	15
I40000102	101.6	-	-	75 mm	181.6	40.0	650	15
I40000108	108.0	-	-	75 mm	188.0	40.0	690	15
I40000114	114.3	4	100	100 mm	194.3	40.0	1,530	5
I40000133	133.0	-	-	100 mm	213.0	40.0	1,670	5
I40000140	139.7	5	125	100 mm	219.7	40.0	1,730	5
I40000160	159.0 - 160.0	-	-	100 mm	240.0	40.0	2,850	8
I40000168	168.3	6	150	100 mm	248.3	40.0	2,960	8
I40000219	219.1	8	200	150 mm	299.1	40.0	4,510	2
I40000273	273.1	-	-	150 mm	353.0	40.0	5,320	2
I40000324	323.9	-	-	150 mm	404.0	40.0	6,090	2
I40000406	406.4	-	-	150 mm	486.4	40.0	6,150	2



Complementary

Bifix[®] G2 (M8/10) (BUP1000)
2S Clamp (M8/10)
Walraven Heavy Duty Clamp HD500

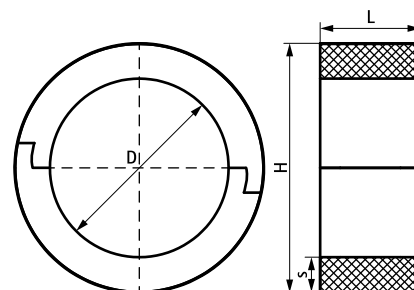
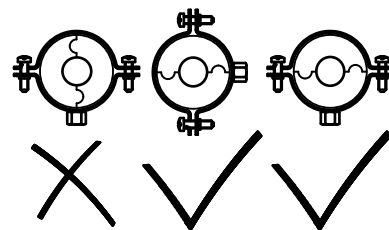
Complementary

Walraven Heavy Duty Clamp HD500
(BUP1000)

BISOFIX[®] PIR40

for insulated pipes 12.0 - 406.4 mm

(D 03 70)



Complementary

- Bifix[®] G2 (M8/10) (BUP1000)
- 2S Clamp (M8/10)
- Walraven Heavy Duty Clamp HD500

Complementary

- Walraven Heavy Duty Clamp HD500 (BUP1000)