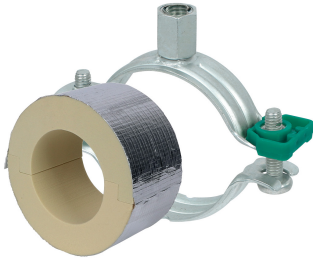


# BISOFIX<sup>®</sup> PIR40 + Bifix<sup>®</sup> G2

(D 03 74)

for insulated pipes 12.0 - 139.7 mm



## Features and Benefits

- for combination with rigid foam insulation
- cover joints with aluminium tape
- insulating pipe support with Bifix<sup>®</sup> G2 clamp
- Bifix<sup>®</sup> G2 with M8/M10 connection nut
- does not contain CFC, HCFC, formaldehyde or cadmium
- fire class B2
- PIR density for D <110mm = 80kg/m<sup>3</sup>
- PIR density for D >110mm = 120kg/m<sup>3</sup>
- thermal conductivity lambda (approx. value): 0.30 W/(mK)
- surface protection:
  - product is part of the Walraven BIS UltraProtect<sup>®</sup> 1000 system
  - suitable for in- and outdoor applications
  - stands min. 1,000 hours salt spray test (max. 5% red rust) according to ISO 9227
- temperature range -45 °C - +105 °C

Part No.	Consists Of	D (mm)	Model	F <sub>a,z</sub> (N)	Pack 1
I403008012	I40000012 + 3008091	12.0	BISOFIX <sup>®</sup> PIR40 + Bifix <sup>®</sup> G2 Clamp	300	50
I403008015	I40000015 + 3008105	15.0 - 16.0	BISOFIX <sup>®</sup> PIR40 + Bifix <sup>®</sup> G2 Clamp	320	50
I403008018	I40000018 + 3008105	17.2 - 18.0	BISOFIX <sup>®</sup> PIR40 + Bifix <sup>®</sup> G2 Clamp	340	50
I403008022	I40000022 + 3008105	21.3 - 22.0	BISOFIX <sup>®</sup> PIR40 + Bifix <sup>®</sup> G2 Clamp	350	50
I403008028	I40000028 + 3008115	26.9 - 28.0	BISOFIX <sup>®</sup> PIR40 + Bifix <sup>®</sup> G2 Clamp	350	25
I403008034	I40000034 + 3008115	33.7 - 35.0	BISOFIX <sup>®</sup> PIR40 + Bifix <sup>®</sup> G2 Clamp	370	25
I403008042	I40000042 + 3008130	42.4	BISOFIX <sup>®</sup> PIR40 + Bifix <sup>®</sup> G2 Clamp	410	25
I403008048	I40000048 + 3008130	48.3	BISOFIX <sup>®</sup> PIR40 + Bifix <sup>®</sup> G2 Clamp	430	25
I403008054	I40000054 + 3008140	54.0	BISOFIX <sup>®</sup> PIR40 + Bifix <sup>®</sup> G2 Clamp	440	25
I403008057	I40000057 + 3008140	56.0 - 57.0	BISOFIX <sup>®</sup> PIR40 + Bifix <sup>®</sup> G2 Clamp	460	25
I403008060	I40000060 + 3008140	60.3	BISOFIX <sup>®</sup> PIR40 + Bifix <sup>®</sup> G2 Clamp	470	25
I403008064	I40000064 + 3008140	64.0	BISOFIX <sup>®</sup> PIR40 + Bifix <sup>®</sup> G2 Clamp	490	25
I403008070	I40000070 + 3008160	70.0	BISOFIX <sup>®</sup> PIR40 + Bifix <sup>®</sup> G2 Clamp	510	15
I403008076	I40000076 + 3008160	76.1	BISOFIX <sup>®</sup> PIR40 + Bifix <sup>®</sup> G2 Clamp	530	15
I403008089	I40000089 + 3008180	88.9	BISOFIX <sup>®</sup> PIR40 + Bifix <sup>®</sup> G2 Clamp	620	15
I403008102	I40000102 + 3008180	101.6	BISOFIX <sup>®</sup> PIR40 + Bifix <sup>®</sup> G2 Clamp	650	15
I403008108	I40000108 + 3008200	108.0	BISOFIX <sup>®</sup> PIR40 + Bifix <sup>®</sup> G2 Clamp	690	15
I403008114	I40000114 + 3008200	114.3	BISOFIX <sup>®</sup> PIR40 + Bifix <sup>®</sup> G2 Clamp	1,530	5
I403008133	I40000133 + 3008210	133.0	BISOFIX <sup>®</sup> PIR40 + Bifix <sup>®</sup> G2 Clamp	1,670	5
I403008140	I40000140 + 3008225	139.7	BISOFIX <sup>®</sup> PIR40 + Bifix <sup>®</sup> G2 Clamp	1,730	5