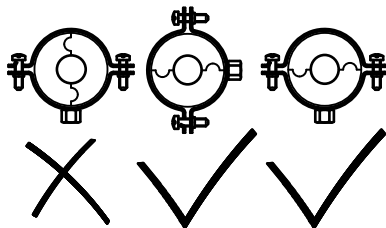
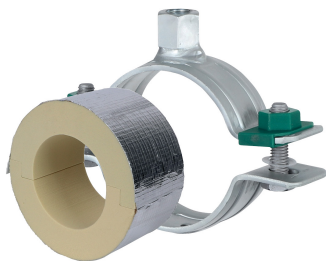


# BISOFIX<sup>®</sup> PIR30 + HD500

(D 03 66)

for insulated pipes 76.1 - 323.9 mm



## Features and Benefits

- for combination with rigid foam insulation
- cover joints with aluminium tape
- insulating pipe support with HD500 clamp
- HD500 clamp with M8/M10 and M10/M12 connection nut
- does not contain CFC, HCFC, formaldehyde or cadmium
- fire class B2
- PIR density for  $D < 110\text{mm} = 80\text{kg/m}^3$
- PIR density for  $D > 110\text{mm} = 120\text{kg/m}^3$
- thermal conductivity lambda (approx. value):  $0.30\text{ W/(mK)}$
- surface protection:
  - product is part of the Walraven BIS UltraProtect<sup>®</sup> 1000 system
  - suitable for in- and outdoor applications
  - stands min. 1,000 hours salt spray test (max. 5% red rust) according to ISO 9227
- temperature range  $-45\text{ °C} - +105\text{ °C}$

Part No.	D (mm)	Model	F <sub>a,z</sub> (N)	Pack 1
I303304076	76.1	BISOFIX <sup>®</sup> PIR30 + HD500 Clamp	460	25
I303304089	88.9	BISOFIX <sup>®</sup> PIR30 + HD500 Clamp	500	15
I303304102	101.6	BISOFIX <sup>®</sup> PIR30 + HD500 Clamp	550	15
I303304108	108.0	BISOFIX <sup>®</sup> PIR30 + HD500 Clamp	620	15
I303304114	114.3	BISOFIX <sup>®</sup> PIR30 + HD500 Clamp	1,370	15
I303304133	133.0	BISOFIX <sup>®</sup> PIR30 + HD500 Clamp	1,520	5
I303304140	139.7	BISOFIX <sup>®</sup> PIR30 + HD500 Clamp	1,570	5
I303304160	159.0 - 160.0	BISOFIX <sup>®</sup> PIR30 + HD500 Clamp	1,720	5
I303304168	168.3	BISOFIX <sup>®</sup> PIR30 + HD500 Clamp	2,720	2
I303304219	219.1	BISOFIX <sup>®</sup> PIR30 + HD500 Clamp	4,210	2
I303304273	273.1	BISOFIX <sup>®</sup> PIR30 + HD500 Clamp	5,020	2
I303304324	323.9	BISOFIX <sup>®</sup> PIR30 + HD500 Clamp	5,790	2