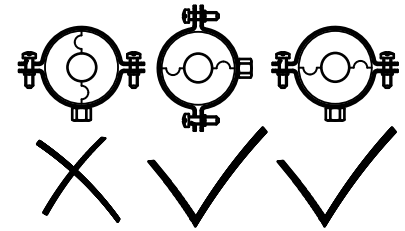
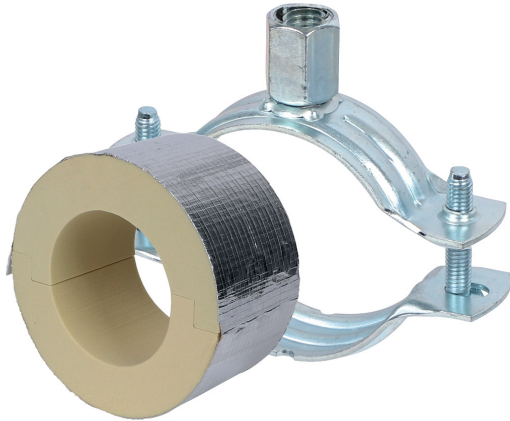


BISOFIX[®] PIR30 + 2S

for insulated pipes 12.0 - 160.0 mm

(D 03 62)



Features and Benefits

- for combination with rigid foam insulation
- cover joints with aluminium tape
- insulating pipe support with 2S clamp
- 2S clamp with M8/M10 connection nut
- does not contain CFC, HCFC, formaldehyde or cadmium
- fire class B2
- PIR density for D <110mm = 80kg/m³
- PIR density for D >110mm = 120kg/m³
- thermal conductivity lambda (approx. value): 0.30 W/(mK)
- clamp: zinc plated
- temperature range -45 °C - +105 °C

Part No.	D (mm)	Model	F _{a,z} (N)	Pack 1
I303303012	12.0	BISOFIX [®] PIR30 + 2S Clamp	130	50
I303303015	15.0 - 16.0	BISOFIX [®] PIR30 + 2S Clamp	170	50
I303303018	17.2 - 18.0	BISOFIX [®] PIR30 + 2S Clamp	190	50
I303303020	20.0	BISOFIX [®] PIR30 + 2S Clamp	200	50
I303303022	21.3 - 22.0	BISOFIX [®] PIR30 + 2S Clamp	230	50
I303303025	25.0	BISOFIX [®] PIR30 + 2S Clamp	260	50
I303303028	26.9 - 28.0	BISOFIX [®] PIR30 + 2S Clamp	300	50
I303303032	32.0	BISOFIX [®] PIR30 + 2S Clamp	310	50
I303303034	33.7 - 35.0	BISOFIX [®] PIR30 + 2S Clamp	320	50
I303303040	40.0	BISOFIX [®] PIR30 + 2S Clamp	340	50
I303303042	42.4	BISOFIX [®] PIR30 + 2S Clamp	350	50
I303303048	48.3	BISOFIX [®] PIR30 + 2S Clamp	370	25
I303303050	50.0	BISOFIX [®] PIR30 + 2S Clamp	370	25
I303303054	54.0	BISOFIX [®] PIR30 + 2S Clamp	380	25
I303303057	56.0 - 57.0	BISOFIX [®] PIR30 + 2S Clamp	390	25
I303303060	60.3	BISOFIX [®] PIR30 + 2S Clamp	410	25
I303303064	64.0	BISOFIX [®] PIR30 + 2S Clamp	420	25
I303303070	70.0	BISOFIX [®] PIR30 + 2S Clamp	440	25
I303303076	76.1	BISOFIX [®] PIR30 + 2S Clamp	460	25
I303303089	88.9	BISOFIX [®] PIR30 + 2S Clamp	500	15
I303303102	101.6	BISOFIX [®] PIR30 + 2S Clamp	550	15
I303303108	108.0	BISOFIX [®] PIR30 + 2S Clamp	620	15
I303303114	114.3	BISOFIX [®] PIR30 + 2S Clamp	1,370	15
I303303133	133.0	BISOFIX [®] PIR30 + 2S Clamp	1,520	5
I303303140	139.7	BISOFIX [®] PIR30 + 2S Clamp	1,570	5
I303303160	159.0 - 160.0	BISOFIX [®] PIR30 + 2S Clamp	1,720	5