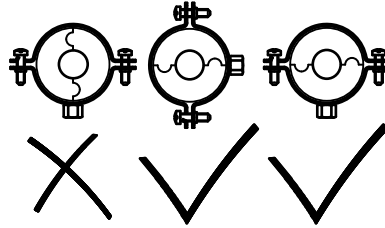
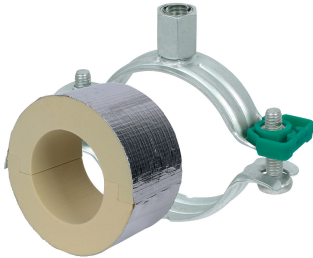


BISOFIX[®] PIR20 + Bifix[®] G2

(D 03 54)

for insulated pipes 12.0 - 168.3 mm



Features and Benefits

- for combination with rigid foam insulation
- cover joints with aluminium tape
- insulating pipe support with Bifix[®] G2 clamp
- Bifix[®] G2 with M8/M10 connection nut
- does not contain CFC, HCFC, formaldehyde or cadmium
- fire class B2
- PIR density for D <110mm = 80kg/m³
- PIR density for D >110mm = 120kg/m³
- thermal conductivity lambda (approx. value): 0.30 W/(mK)
- surface protection:
 - product is part of the Walraven BIS UltraProtect[®] 1000 system
 - suitable for in- and outdoor applications
 - stands min. 1,000 hours salt spray test (max. 5% red rust) according to ISO 9227
- temperature range -45 °C - +105 °C

Part No.	Consists Of	D (mm)	Model	F _{a,z} (N)	Pack 1
I203008012	I200000012 + 3008052	12.0	BISOFIX [®] PIR20 + Bifix [®] G2 Clamp	120	50
I203008015	I200000015 + 3008058	15.0 - 16.0	BISOFIX [®] PIR20 + Bifix [®] G2 Clamp	160	50
I203008018	I200000018 + 3008058	17.2 - 18.0	BISOFIX [®] PIR20 + Bifix [®] G2 Clamp	170	50
I203008022	I200000022 + 3008064	21.3 - 22.0	BISOFIX [®] PIR20 + Bifix [®] G2 Clamp	180	50
I203008028	I200000028 + 3008070	26.9 - 28.0	BISOFIX [®] PIR20 + Bifix [®] G2 Clamp	200	50
I203008034	I200000034 + 3008079	33.7 - 35.0	BISOFIX [®] PIR20 + Bifix [®] G2 Clamp	220	50
I203008042	I200000042 + 3008083	42.4	BISOFIX [®] PIR20 + Bifix [®] G2 Clamp	280	50
I203008048	I200000048 + 3008091	48.3	BISOFIX [®] PIR20 + Bifix [®] G2 Clamp	300	50
I203008054	I200000054 + 3008091	54.0	BISOFIX [®] PIR20 + Bifix [®] G2 Clamp	320	50
I203008057	I200000057 + 3008105	56.0 - 57.0	BISOFIX [®] PIR20 + Bifix [®] G2 Clamp	330	50
I203008060	I200000060 + 3008105	60.3	BISOFIX [®] PIR20 + Bifix [®] G2 Clamp	340	50
I203008064	I200000064 + 3008105	64.0	BISOFIX [®] PIR20 + Bifix [®] G2 Clamp	350	50
I203008070	I200000070 + 3008115	70.0	BISOFIX [®] PIR20 + Bifix [®] G2 Clamp	370	25
I203008076	I200000076 + 3008115	76.1	BISOFIX [®] PIR20 + Bifix [®] G2 Clamp	390	25
I203008089	I200000089 + 3008130	88.9	BISOFIX [®] PIR20 + Bifix [®] G2 Clamp	430	25
I203008102	I200000102 + 3008140	101.6	BISOFIX [®] PIR20 + Bifix [®] G2 Clamp	450	25
I203008108	I200000108 + 3008160	108.0	BISOFIX [®] PIR20 + Bifix [®] G2 Clamp	500	25
I203008114	I200000114 + 3008160	114.3	BISOFIX [®] PIR20 + Bifix [®] G2 Clamp	1,110	15
I203008133	I200000133 + 3008180	133.0	BISOFIX [®] PIR20 + Bifix [®] G2 Clamp	1,360	5
I203008140	I200000140 + 3008180	139.7	BISOFIX [®] PIR20 + Bifix [®] G2 Clamp	1,410	5
I203008160	I200000160 + 3008200	159.0 - 160.0	BISOFIX [®] PIR20 + Bifix [®] G2 Clamp	1,520	5
I203008168	I200000168 + 3008210	168.3	BISOFIX [®] PIR20 + Bifix [®] G2 Clamp	1,570	5