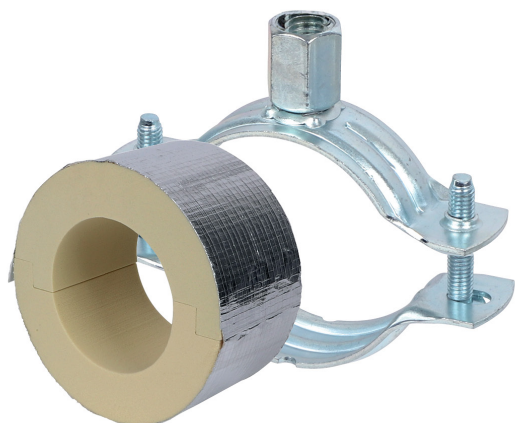


# BISOFIX<sup>®</sup> PIR20 + 2S

for insulated pipes 12.0 - 168.3 mm

(D 03 52)



## Features and Benefits

- for combination with rigid foam insulation
- cover joints with aluminium tape
- insulating pipe support with 2S clamp
- 2S clamp with M8/M10 connection nut
- does not contain CFC, HCFC, formaldehyde or cadmium
- fire class B2
- PIR density for D <110mm = 80kg/m<sup>3</sup>
- PIR density for D >110mm = 120kg/m<sup>3</sup>
- thermal conductivity lambda (approx. value): 0.30 W/(mK)
- clamp: zinc plated
- temperature range -45 °C - +105 °C

Part No.	D (mm)	Model	F <sub>a,z</sub> (N)	Pack 1
I203303012	12.0	BISOFIX <sup>®</sup> PIR20 + 2S Clamp	120	50
I203303015	15.0 - 16.0	BISOFIX <sup>®</sup> PIR20 + 2S Clamp	160	50
I203303018	17.2 - 18.0	BISOFIX <sup>®</sup> PIR20 + 2S Clamp	170	50
I203303020	20.0	BISOFIX <sup>®</sup> PIR30 + 2S Clamp	180	50
I203303022	21.3 - 22.0	BISOFIX <sup>®</sup> PIR20 + 2S Clamp	180	50
I203303025	25.0	BISOFIX <sup>®</sup> PIR20 + 2S Clamp	190	50
I203303028	26.9 - 28.0	BISOFIX <sup>®</sup> PIR20 + 2S Clamp	200	50
I203303032	32.0	BISOFIX <sup>®</sup> PIR20 + 2S Clamp	210	50
I203303034	33.7 - 35.0	BISOFIX <sup>®</sup> PIR20 + 2S Clamp	220	50
I203303040	40.0	BISOFIX <sup>®</sup> PIR20 + 2S Clamp	260	50
I203303042	42.4	BISOFIX <sup>®</sup> PIR20 + 2S Clamp	280	50
I203303048	48.3	BISOFIX <sup>®</sup> PIR20 + 2S Clamp	300	50
I203303050	50.0	BISOFIX <sup>®</sup> PIR20 + 2S Clamp	310	50
I203303054	54.0	BISOFIX <sup>®</sup> PIR20 + 2S Clamp	320	50
I203303057	56.0 - 57.0	BISOFIX <sup>®</sup> PIR20 + 2S Clamp	330	50
I203303060	60.3	BISOFIX <sup>®</sup> PIR20 + 2S Clamp	340	50
I203303064	64.0	BISOFIX <sup>®</sup> PIR20 + 2S Clamp	350	25
I203303070	70.0	BISOFIX <sup>®</sup> PIR20 + 2S Clamp	370	25
I203303076	76.1	BISOFIX <sup>®</sup> PIR20 + 2S Clamp	390	25
I203303089	88.9	BISOFIX <sup>®</sup> PIR20 + 2S Clamp	430	25
I203303102	101.6	BISOFIX <sup>®</sup> PIR20 + 2S Clamp	450	25
I203303108	108.0	BISOFIX <sup>®</sup> PIR20 + 2S Clamp	500	25
I203303114	114.3	BISOFIX <sup>®</sup> PIR20 + 2S Clamp	1,110	15
I203303133	133.0	BISOFIX <sup>®</sup> PIR20 + 2S Clamp	1,360	5
I203303140	139.7	BISOFIX <sup>®</sup> PIR20 + 2S Clamp	1,410	5
I203303160	159.0 - 160.0	BISOFIX <sup>®</sup> PIR20 + 2S Clamp	1,520	5
I203303168	168.3	BISOFIX <sup>®</sup> PIR20 + 2S Clamp	1,570	5