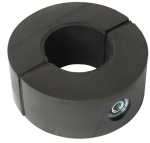


## BISOFIX<sup>®</sup> 88

(D 05 40)

for insulated pipes 15.8 - 324.3 mm

M8/M10/1/2" - M12/1/2" - M16/3/4"



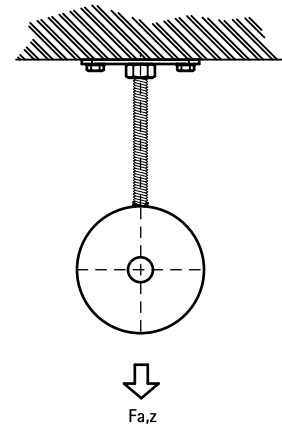
0880060



0880273

### Features and Benefits

- two-screw clamp integrated in PUR foam
- for fixing of thermal isolated pipe of steel, copper or stainless steel
- no adhesion necessary due to Inda rubber inlay
- vapour proof glueing to pipe insulation
- suitable for heavy applications (for example with bigger spans), waste stacks, etc.
- the whole is smoothly completed for a better connection with the pipe insulation
- working temperature from -50 °C to +105 °C
- the foam prevents the forming of a thermal bridge and prevents the steel parts from corrosion
- material: clamp of steel; insulation shell made of PUR closed cell solid foam
- good resistant to chemicals influences
- excellent thermal and mechanical properties
- clamp: zinc plated



Part No.	D (mm)	D (")	DN	G	B (mm)	b x s (mm)	F <sub>a,z</sub> (N)	Pack 1
0880015	15.8	-	-	M8/10/G1/2"	87	40 x 30	270	10
0880018	18.0	-	-	M8/10/G1/2"	87	40 x 30	280	10
0880021	21.3	1/2	15	M8/10/G1/2"	87	40 x 30	330	10
0880022	22.0	-	-	M8/10/G1/2"	87	40 x 30	340	10
0880027	26.9	3/4	20	M8/10/G1/2"	87	40 x 30	420	10
0880028	28.0	-	-	M8/10/G1/2"	87	40 x 30	440	10
0880033	33.7	1	25	M8/10/G1/2"	96	40 x 30	530	10
0880035	35.0	-	-	M8/10/G1/2"	96	40 x 30	550	10
0880042	42.4	1 1/4	32	M8/10/G1/2"	103	40 x 30	660	10
0880048	48.3	1 1/2	40	M8/10/G1/2"	108	40 x 30	750	10
0880054	54.0	-	-	M8/10/G1/2"	117	40 x 30	870	10
0880057	57.0	-	-	M8/10/G1/2"	117	40 x 30	890	10
0880060	60.3	2	50	M8/10/G1/2"	120	50 x 30	1,200	10
0880076	76.1	2 1/2	65	M8/10/G1/2"	136	50 x 30	1,480	10
0880089	88.9	3	80	M8/10/G1/2"	149	50 x 30	1,730	10
0880108	108.0	-	-	M8/10/G1/2"	188	60 x 40	2,530	10
0880114	114.3	4	100	M8/10/G1/2"	195	60 x 40	2,670	5
0880133	133.0	-	-	M8/10/G1/2"	219	60 x 40	3,110	5
0880139	139.7	5	125	M8/10/G1/2"	219	60 x 40	3,270	5
0880159	159.0	-	-	M12 - G1/2"	239	60 x 40	3,720	5
0880168	168.3	6	150	M12 - G1/2"	248	60 x 40	4,400	4
0880219	219.1	8	200	M16 - G3/4"	340	100 x 60	5,260	5
0880273	273.2	10	250	M16	493	100 x 60	14,100	3
0880324	324.3	12	300	M20	576	100 x 60	16,800	3

### Complementary

Walraven RapidRail<sup>®</sup> Fixing System  
Walraven Fixing Accessories  
Walraven Fastenings