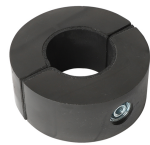


BISOFIX[®] 88

(D 05 40)

for insulated pipes 15.8 - 406.4 mm

M8/M10/1/2" - M12/1/2" - M16/3/4"



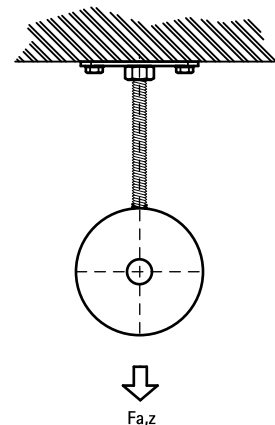
0880060



0880273

Features and Benefits

- two-screw clamp integrated in PUR foam
- for fixing of thermal isolated pipe of steel, copper or stainless steel
- no adhesion necessary due to Inda rubber inlay
- vapour proof glueing to pipe insulation
- suitable for heavy applications (for example with bigger spans), waste stacks, etc.
- the whole is smoothly completed for a better connection with the pipe insulation
- working temperature from -50 °C to +105 °C
- the foam prevents the forming of a thermal bridge and prevents the steel parts from corrosion
- material: clamp of steel; insulation shell made of PUR closed cell solid foam
- good resistant to chemicals influences
- excellent thermal and mechanical properties
- clamp: zinc plated



Part No.	D (mm)	D (")	DN	G	B (mm)	b x s (mm)	F _{a,z} (N)	Pack 1
0880015	15.8	-	-	M8/M10/1/2"	75	40 x 30	180	10
0880017	17.2	3/8	10	M8/M10/1/2"	77	40 x 30	180	10
0880018	18.0	-	-	M8/M10/1/2"	78	40 x 30	180	10
0880021	21.3	1/2	15	M8/M10/1/2"	81	40 x 30	220	10
0880022	22.0	-	-	M8/M10/1/2"	82	40 x 30	220	10
0880027	26.9	3/4	20	M8/M10/1/2"	87	40 x 30	280	10
0880028	28.0	-	-	M8/M10/1/2"	88	40 x 30	280	10
0880033	33.7	1	25	M8/M10/1/2"	93	40 x 30	350	10
0880035	35.0	-	-	M8/M10/1/2"	95	40 x 30	350	10
0880042	42.4	1 1/4	32	M8/M10/1/2"	102	40 x 30	440	10
0880048	48.3	1 1/2	40	M8/M10/1/2"	108	40 x 30	500	10
0880054	54.0	-	-	M8/M10/1/2"	114	40 x 30	590	10
0880057	57.0	-	-	M8/M10/1/2"	117	40 x 30	590	10
0880060	60.3	2	50	M8/M10/1/2"	120	50 x 30	620	10
0880076	76.1	2 1/2	65	M8/M10/1/2"	136	50 x 30	1,180	10
0880089	88.9	3	80	M8/M10/1/2"	149	50 x 30	1,390	10
0880108	108.0	-	-	M8/M10/1/2"	188	60 x 40	2,240	10
0880114	114.3	4	100	M8/M10/1/2"	195	60 x 40	2,370	3
0880133	133.0	-	-	M8/M10/1/2"	213	60 x 40	2,760	5
0880139	139.7	5	125	M8/M10/1/2"	220	60 x 40	2,880	5
0880159	159.0	-	-	M12/1/2"	240	60 x 40	3,310	5
0880168	168.3	6	150	M12/1/2"	250	60 x 40	3,490	5
0880219	219.1	8	200	M16	340	100 x 60	4,550	5
0880273	273.2	10	250	M16	393	100 x 60	11,470	2
0880324	324.3	12	300	M20	448	100 x 60	13,600	2
0880355	355.6	14	350	M20	477	100 x 60	14,940	1
0880368	368.0	-	350	M20	492	120 x 60	18,550	1
0880406	406.4	16	400	M24	530	120 x 60	20,480	1

Complementary

- BIS RapidRail[®] Fixing System
- BIS Fixing Accessories
- BIS Fastenings