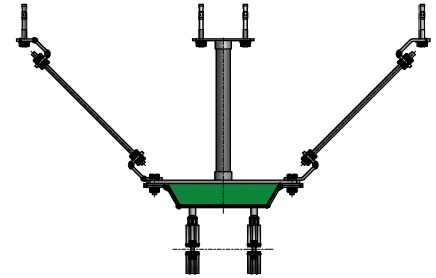
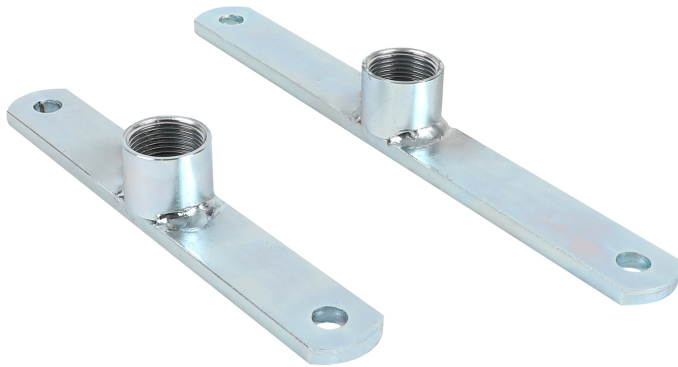


BIS dB-FiX[®] 80 / 200 Support Plate

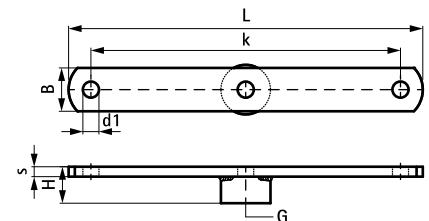
(E 05 47)



Features and Benefits

- for mounting a BIS dB-FiX[®] fixing point at a distance from a wall or ceiling
- to be used in combination with BIS Wall Plate CO₂ welded (Part No: 6719033)
- axial support by threaded rods in combination with BIS Adjustable Support (BUP1000)(Part No. 66588818) or BIS Threaded Rod Support (Part No. 6698015)
- CO₂ welded
- material: steel 1.0332
- zinc plated

Part No.	G	L	B (mm)	H (mm)	s (mm)	d1 (mm)	k (mm)	For	Pack 1
6698030	G1"	286 mm	35	38	8.0	13.0	250	BIS dB-FiX [®] 80	25
6698035	G1"	361 mm	35	38	8.0	13.0	325	BIS dB-FiX [®] 200	25



Complementary

BIS dB-FiX[®] 80 Fixing Point Assembly
 BIS dB-FiX[®] 200 Fixing Point Assembly
 BIS Wall Plate Resistance Welded

Complementary

Walraven Threaded Tube
 BIS Threaded Rod Support
 Walraven Threaded Rod