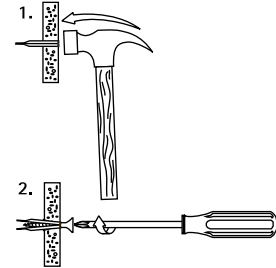
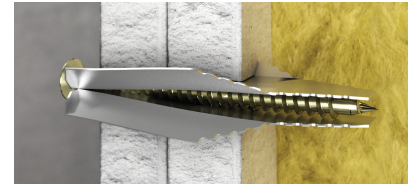


# BIS XL

(L 10 12)

fixing to double plaster board > 13 mm



## Features and Benefits

- hammer-in plug
- for heavy applications
  - applications: pipe fixings, radiators, heaters, airco-units, etc.
- for chipboard screw (Ø 4.0 - 5.0 mm, min. length 45 mm)
- easy and quick to use
  - no drill
  - plug anchors itself when tightening the screw
  - does not rotate on screwing
- material: steel
- better fire resistance than plastic plugs
- zinc plated

Part No.	Model	s (mm)	Lh (mm)	F <sub>a,z</sub> (N)	F <sub>a,x</sub> (N)	Pack 1	Pack 2
6114121	Incl. screws (TF)	4.0	50	250	700	12	120
6114143	Incl. screws (TF)	4.0	50	250	700	100	600
6114031	Without Screws	-	-	250	700	50	250
6114053	Without Screws	-	-	250	700	150	900
6114092	Without Screws	-	-	250	700	1,000	-

Max. allowed load in plasterboard (safety margin 1:2).

