

BIS Strut Washer – Flat (zp)

(H 24 85)

fixing to Strut rail

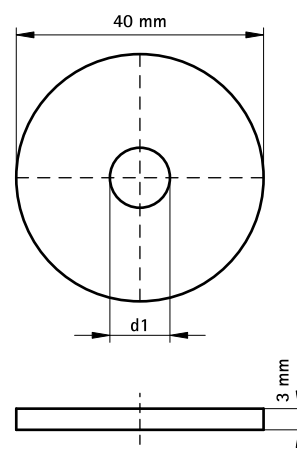


Features and Benefits

- flat washer
- material: steel 1.0332
- zinc plated
- tested for fire safety

Part No.	B (mm)	d1 (mm)	For Rail	Pack 1	Pack 2
6533506	40	Ø 6.4	Strut	50	250
6533508	40	Ø 8.4	Strut	50	250
6533510	40	Ø 10.5	Strut	50	250
6533512	40	Ø 13.0	Strut	50	250

Ø 10.5 and above tested for fire safety.
Also available in stainless steel 1.4401 (AISI 316).



Complementary

BIS RapidStrut® Cantilever Arm (BUP1000)
BIS RapidStrut® Fixing Rail DS 5
(BUP1000)

Alternative

BIS Strut Washer - Flat (BUP1000)
BIS Strut Washer - U-shaped (BUP1000)