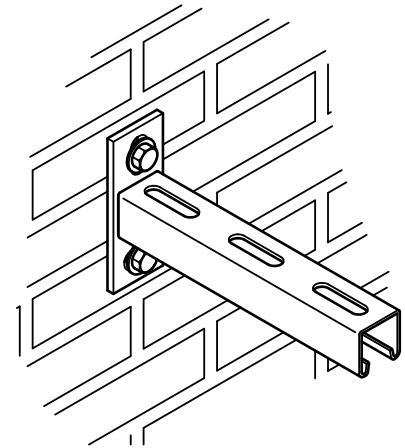
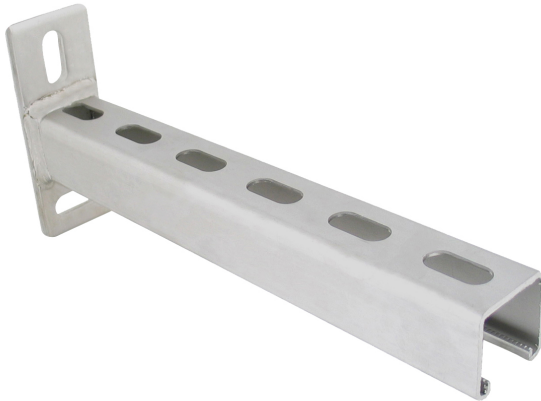


# BIS RapidStrut® Stainless Steel Cantilever Arm

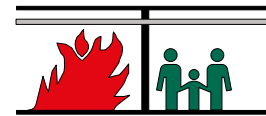
(M 50 05)

fixing to wall



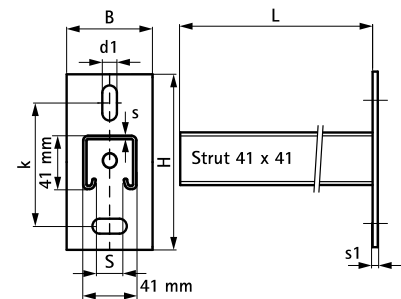
## Features and Benefits

- wall plate welded on Strut Profile
- slots at 90° to each other to simplify fixing
- CO<sub>2</sub> welded
- inward formed flanges with serrated profile for extra grip
- for more information about the max. allowed load ( $F_{a,z}$ ) please refer to the loading tables or our online datasheet 'Technical Details BIS RapidStrut®'
- material: stainless steel 1.4401 (AISI 316)
- tested for fire safety



Part No.	L	B	H	s	s1	d1	S	k	From Rail	Pack 1
		(mm)	(mm)	(mm)	(mm)	(mm)	(mm)	(mm)		
660 7 861	150 mm	45	130	2.5	8.0	30 x 13	22	87.5	Strut 41x41	10
660 7 870	200 mm	45	130	2.5	8.0	30 x 13	22	87.5	Strut 41x41	10
660 7 862	300 mm	45	130	2.5	8.0	30 x 13	22	87.5	Strut 41x41	10
660 7 874	400 mm	45	130	2.5	8.0	30 x 13	22	87.5	Strut 41x41	10
660 7 863	450 mm	45	130	2.5	8.0	30 x 13	22	87.5	Strut 41x41	10
660 7 873	500 mm	45	130	2.5	8.0	30 x 13	22	87.5	Strut 41x41	10
660 7 864	600 mm	45	130	2.5	8.0	30 x 13	22	87.5	Strut 41x41	8
660 7 865	750 mm	45	130	2.5	8.0	30 x 13	22	87.5	Strut 41x41	8

For more information about the max. allowed load ( $F_{a,z}$ ) please refer to the loading tables or our online datasheet 'Technical Details BIS RapidStrut®'.



## Complementary

- BIS Strut Stainless Steel Slide Nut
- BIS Strut Stainless Steel Tee-Bolt
- BIS Strut Stainless Steel Slide Nut with Tabs