

# BIS RapidRail® Stainless Steel Hammerfix

(M 31 25)

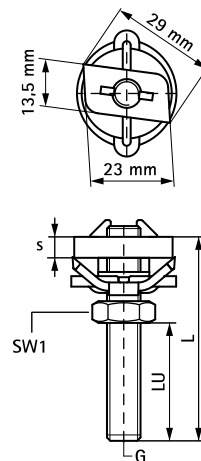
fixing to BIS RapidRail®



## Features and Benefits

- slide nut with stud bolt, washer and BIS RapidRail® spring
- ready-to-use pre-assembled for a quick fixing, and retains assembly in place before final tightening
- material: metal parts made of stainless steel 1.4401 (AISI 316); spring(s) made of POM (polyoxymethylene), blue

Part No.	G	L	LU (mm)	b x s (mm)	SW1 (mm)	T <sub>(max.)</sub> (Nm)	For Rail	F <sub>a,z</sub> (N)	Pack 1	Pack 2
652 7 062	M6	25 mm	11	13.5 x 4.0	10	7.5	WM1, 15, 2	2,000	25	250
652 7 084	M8	40 mm	25	13.5 x 5.0	13	15.0	WM1, 15, 2	5,000	25	250
652 7 088	M8	80 mm	65	13.5 x 5.0	13	15.0	WM1, 15, 2	5,000	25	250
652 7 094	M10	40 mm	22	14.0 x 5.0	17	15.0	WM1, 15, 2	4,750	25	250
652 7 098	M10	80 mm	62	14.0 x 5.0	17	15.0	WM1, 15, 2	4,750	25	250



## Complementary

BIS RapidRail® Stainless Steel Fixing Rail  
 BIS RapidRail® Stainless Steel Cantilever  
 Arm