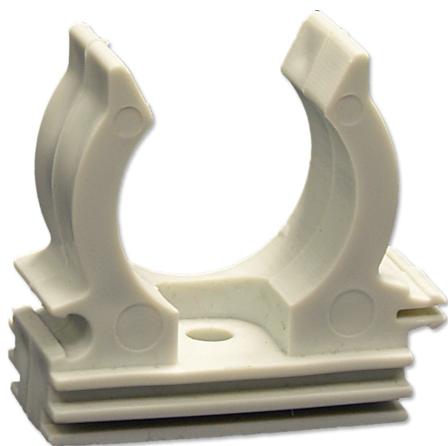


# BIS Rail Clip 100

for fixing of cables and tubes 15 - 50 mm

(C 10 18)



## Features and Benefits

- one-part clamp
- especially appropriate for electricity tubes and for cables with rubber covering
- space saving
- can also be installed with direct fixing gas tools
- installation in channel or rapid installation with screw M6
- hole for M6 screw
- material: PP (polypropylene), grey (according to RAL 7035)
- halogen free
- UV resistant

Part No.	D (mm)	D (")	DN	B (mm)	Pack 1	Pack 2
08511018	15 - 18	3/8	10	24	100	1,000
08511022	20 - 22	1/2	15	31	100	1,200
08511028	25 - 28	3/4	20	37	100	1,200
08511035	32 - 35	1	25	45	50	600
08511040	40	1 1/4	32	55	50	300
08511050	50	1 1/2	40	65	25	300

