

# BIS Push-fit Saddle - Single (White)

(C 10 25)

for all pipes 8 - 35 mm

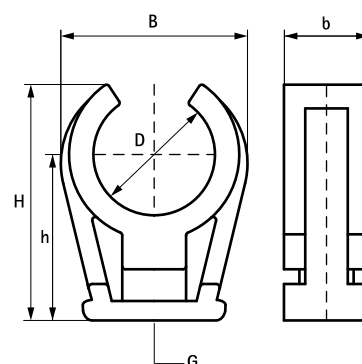
M6



## Features and Benefits

- one-part clamp
- connection thread M6 made of brass
- material: PP (polypropylene), white (according to RAL 9016)
- fire class B2
- no corrosion, recyclable, halogen free, resistant to UV and ageing
- temperature resistance from approx. -30 °C to approx. +90 °C (constant); short to approx. +110 °C

Part No.	D (mm)	D (°)	DN	G	B (mm)	H (mm)	h (mm)	b (mm)	Pack 1	Pack 2
0853008	8	-	-	M6	14	18	14	12	100	2,000
0853010	10	1/8	6	M6	18	20	17	12	100	1,000
0853012	12	-	-	M6	20	22	18	12	100	1,000
0853015	14 - 15	-	-	M6	24	26	19	12	100	1,000
0853018	16 - 18	3/8	10	M6	27	30	24	14	100	1,200
0853022	20 - 22	1/2	15	M6	31	32	28	14	100	1,200
0853025	25	3/4	20	M6	35	38	16	14	100	1,200
0853028	28	3/4	20	M6	39	47	34	14	100	1,000
0853035	35	-	-	M6	50	54	38	14	50	600



Alternative  
BIS starQuick® Clamp (White)