

BIS Plug Clamp

for floor pipe 14 - 25 mm

391

(0 15 17)



391 1 02X

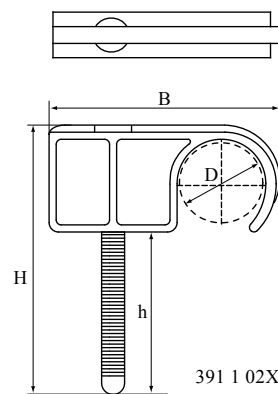


391 1 22X

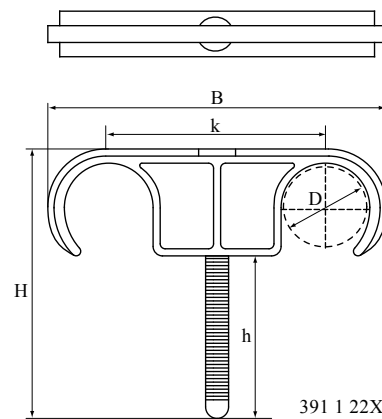
Features and Benefits

- to fix pipe-in-pipe pipes before casting top floor layer
- material: PA (polyamide)

Part No.	D (mm)	Model	B (mm)	H (mm)	k (mm)	Pack 1
3911020	14 - 20	Single	34	48	-	500
3911025	20 - 25	Single	47	60	-	500
3911220	14 - 20	Double	51	48	32	500
3911225	20 - 25	Double	77	60	46	250



391 1 02X



391 1 22X

