

# BIS Pipe Saddle hdg

for steel pipes 21.5 - 60.3 mm

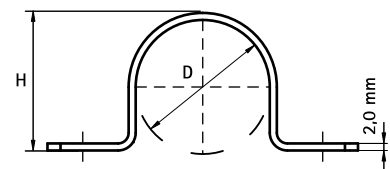
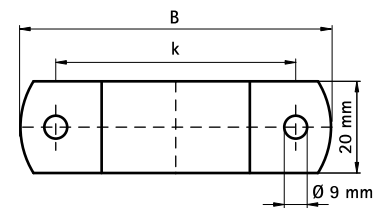
(B 30 10)



## Features and Benefits

- one-part saddle
- material: steel
- hot dip galvanized

Part No.	D (mm)	D (")	DN	B (mm)	H (mm)	k (mm)	F <sub>a,z</sub> (N)	Pack 1
4601021	21.5	1/2	15	70	23	50	3,500	50
4601027	26.9	3/4	20	78	28	58	3,500	50
4601033	33.7	1	25	82	34	62	3,500	50
4601043	42.5	1 1/4	32	92	44	72	3,500	50
4601048	48.0	1 1/2	40	97	47	77	3,500	50
4601061	60.3	2	50	108	58	88	3,500	50



Complementary  
BIS Fastenings

Alternative  
BIS Industrial Saddle