

BIS Heavy Duty Clamp HD1501 (BUP1000)

(A 10 09)

for metal pipes 15 - 509 mm

G $\frac{1}{2}$ "



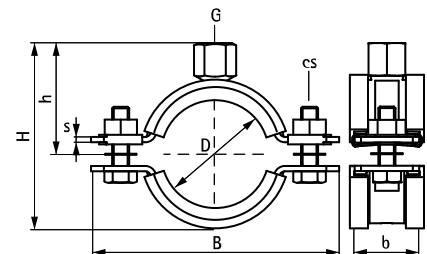
Features and Benefits

- two-part clamp with two locking bolts
- up to and including 5": locking nut is captive, hidden in plastic holder
- heavy design
- bolts secured with anti-loss washer
- with CO $_2$ welded connection nut
- material: steel
- surface protection:
 - product is part of the Walraven BIS UltraProtect[®] 1000 system
 - suitable for in- and outdoor applications
- surface protection:
 - stands min. 1,000 hours salt spray test (max. 5% red rust) according to ISO 9227
- noise insulating lining, EPDM rubber, black
- age resistant lining
- sound insulating lining according DIN 4109
- noise reduction according to ISO 3822-1 up to 18 dB(A)



RAL-GZ 655/B
Cert.Nr. 2011-12a

Part No.	D (mm)	D (")	DN	G	B (mm)	H (mm)	h (mm)	b x s (mm)	cs	F _{a,z} (N)	Pack 1
33178019	15 - 19	3/8	10	G $\frac{1}{2}$ "	81	50	30	30 x 2.5	M8	1,500	25
33178023	19 - 23	1/2	15	G $\frac{1}{2}$ "	84	53	32	30 x 2.5	M8	1,500	25
33178029	25 - 29	3/4	20	G $\frac{1}{2}$ "	91	59	35	30 x 2.5	M8	1,500	25
33178035	30 - 35	1	25	G $\frac{1}{2}$ "	98	65	38	30 x 2.5	M8	1,500	25
33178045	40 - 45	1 1/4	32	G $\frac{1}{2}$ "	109	75	43	30 x 2.5	M8	1,500	25
33178051	46 - 51	1 1/2	40	G $\frac{1}{2}$ "	115	81	46	30 x 2.5	M8	1,500	25
33178059	53 - 59	-	-	G $\frac{1}{2}$ "	122	88	50	30 x 2.5	M8	1,500	25
33178064	59 - 64	2	50	G $\frac{1}{2}$ "	129	94	53	30 x 2.5	M8	1,500	25
33178071	65 - 71	-	-	G $\frac{1}{2}$ "	136	102	57	30 x 3.0	M8	2,300	25
33178078	72 - 78	2 1/2	65	G $\frac{1}{2}$ "	144	109	60	30 x 3.0	M8	2,300	25
33178085	79 - 85	-	-	G $\frac{1}{2}$ "	152	116	64	30 x 3.0	M8	2,300	25
33178092	86 - 92	3	80	G $\frac{1}{2}$ "	159	123	68	30 x 3.0	M8	2,300	25
33178109	101 - 109	-	-	G $\frac{1}{2}$ "	175	140	74	30 x 3.0	M8	2,300	25
33178116	108 - 116	4	100	G $\frac{1}{2}$ "	182	147	79	30 x 3.0	M8	2,300	25
33178133	125 - 133	-	-	G $\frac{1}{2}$ "	200	164	86	30 x 3.0	M8	2,300	25
33178140	132 - 140	5	125	G $\frac{1}{2}$ "	207	171	91	30 x 3.0	M8	2,300	15
33178169	159 - 169	6	150	G $\frac{1}{2}$ "	254	210	110	38 x 4.0	M10	3,800	15
33178188	178 - 188	-	-	G $\frac{1}{2}$ "	274	229	120	38 x 4.0	M10	3,800	15
33178204	194 - 204	-	-	G $\frac{1}{2}$ "	290	245	128	38 x 4.0	M10	3,800	15
33178213	203 - 213	-	-	G $\frac{1}{2}$ "	299	254	133	38 x 4.0	M10	3,800	15
33178227	217 - 227	8	200	G $\frac{1}{2}$ "	322	268	140	38 x 4.0	M12	3,800	2
33178250	240 - 250	-	-	G $\frac{1}{2}$ "	345	292	153	38 x 4.0	M12	3,800	2
33178275	265 - 275	10	250	G $\frac{1}{2}$ "	367	317	165	48 x 5.0	M12	9,200	2
33178325	315 - 325	12	300	G $\frac{1}{2}$ "	414	364	188	48 x 5.0	M12	9,200	2
33178364	354 - 364	14	350	G $\frac{1}{2}$ "	453	402	207	48 x 5.0	M12	9,200	2
33178408	398 - 408	16	400	G $\frac{1}{2}$ "	497	446	229	48 x 5.0	M12	9,200	2
33178458	448 - 458	18	450	G $\frac{1}{2}$ "	548	496	254	48 x 5.0	M12	9,200	2
33178509	499 - 509	20	500	G $\frac{1}{2}$ "	599	547	279	48 x 5.0	M12	9,200	2



RAL¹ = tested, certified and monitored by a third party according to RAL-GZ 655/B.

For detailed technical information about our RAL marked products, please see the RAL datasheet in our web catalogue.

Complementary

Walraven RapidStrut[®] Fixing System
Walraven Fixing Accessories
Walraven Fastenings

Complementary

BIS Silicone Profile
Walraven Threaded Tube