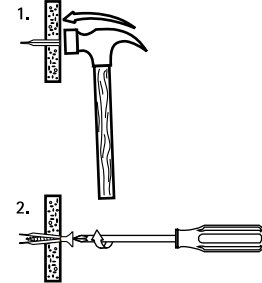
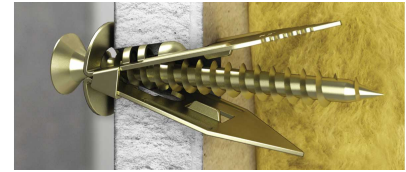
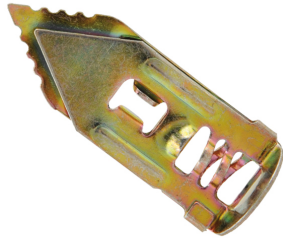


BIS GOLD

(L 10 08)

fixing to plaster board 9 - 13 mm



Features and Benefits

- hammer-in plug
- for medium applications
- for chipboard screw (Ø 3.5 - 5.0 mm, min. length 30 mm)
- easy and quick to use
 - no drill
 - plug anchors itself when tightening the screw
 - does not rotate on screwing
 - removable with very low damage to the wall
- with serrated point for easier hammering-in
- with flat head
- with screw guide and female wood thread
- material: steel
- better fire resistance than plastic plugs
- surface treatment: zinc plated, colored

Part No.	Model	s (mm)	Lh (mm)	F _{a,z} (N)	F _{a,x} (N)	Pack 1	Pack 2
611 2 211	Incl. screws (TF)	4.0	30	150	300	6	60
611 2 231	Incl. screws (TF)	4.0	30	150	300	25	250
611 2 331	Incl. screws (TF)	4.0	50	150	300	25	250
611 2 251	Incl. screws (TF)	4.0	30	150	300	50	500
611 2 263	Incl. screws (TF)	4.0	30	150	300	200	1,200
611 2 051	Excl. screws	-	-	150	300	50	500
611 2 063	Excl. screws	-	-	150	300	200	1,200

Max. allowed load in plasterboard (safety margin 1:2).

