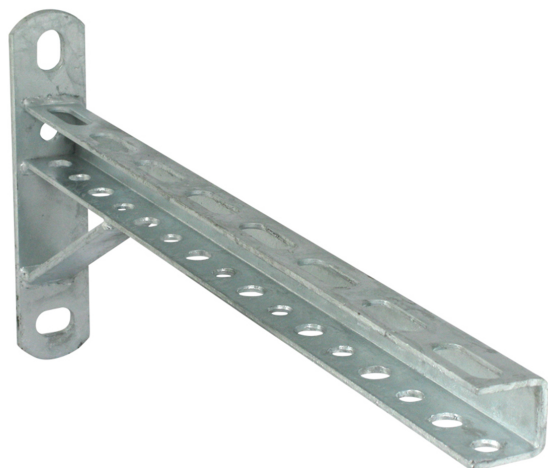


BIS Cantilever Arm - U-shaped

(G 10 20)

fixing to wall or ceiling



Features and Benefits

- U-profile welded on wall plate
- slots at 90° to each other to simplify fixing
- material: steel
- hot dip galvanized

Part No.	Model	L	B	H	s	s1	d1	k	From Rail	Pack 1
		(mm)	(mm)	(mm)	(mm)	(mm)	(mm)	(mm)		
6601911	With prop	255 mm	40	230	5.0	3.0	20 x 13	190	U-rail	5
6601912	With prop	305 mm	40	230	5.0	3.0	20 x 13	190	U-rail	5
6601913	With prop	405 mm	40	230	5.0	3.0	20 x 13	190	U-rail	5
6601914	With prop	605 mm	40	230	5.0	3.0	20 x 13	190	U-rail	5
6601915	With prop	805 mm	40	400	5.0	3.0	20 x 13	360	U-rail	5

