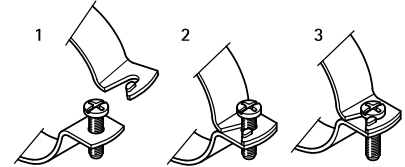


BIS Bifix[®] 300 Stainless Steel

(M 10 05)

for stainless steel pipes Ø 15 - 219 mm

M8 - M10



Features and Benefits

- two-screw clamp
- material: stainless steel 1.4404 (AISI 316L)
- with quick locking system

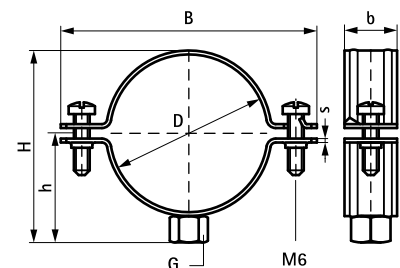


RAL-GZ 655/B
Cert.Nr. 2004-09

| Part No. | D (mm) | D (°) | DN | G | B (mm) | H (mm) | h (mm) | b x s (mm) | F _{a,z} (N) | RAL | Pack 1 |
|-----------|-----------|----------|-----|-----|-----------|-----------|-----------|---------------|-------------------------|------------------|--------|
| 301 7 017 | 15 - 19 | 3/8 | 10 | M8 | 56 | 31 | 19 | 20 x 1.25 | 1,000 | - | 50 |
| 301 7 022 | 20 - 22 | 1/2 | 15 | M8 | 58 | 33 | 20 | 20 x 1.25 | 1,000 | - | 50 |
| 301 7 030 | 25 - 28 | 3/4 | 20 | M8 | 64 | 39 | 23 | 20 x 1.25 | 1,000 | - | 50 |
| 301 7 034 | 31 - 35 | 1 | 25 | M8 | 72 | 47 | 27 | 20 x 1.25 | 1,000 | - | 50 |
| 301 7 042 | 40 - 43 | 1 1/4 | 32 | M8 | 80 | 54 | 31 | 20 x 1.25 | 1,000 | - | 50 |
| 301 7 051 | 47 - 51 | 1 1/2 | 40 | M8 | 87 | 62 | 35 | 20 x 1.25 | 1,000 | - | 50 |
| 301 7 060 | 54 - 60 | - | - | M8 | 96 | 71 | 39 | 20 x 1.25 | 1,000 | - | 50 |
| 301 7 076 | 72 - 76 | - | - | M8 | 109 | 86 | 46 | 20 x 2.00 | 1,500 | RAL ¹ | 25 |
| 301 7 089 | 85 - 89 | 3 | 80 | M8 | 124 | 101 | 54 | 20 x 2.00 | 1,500 | RAL ¹ | 25 |
| 301 7 118 | 110 - 118 | 4 | 100 | M8 | 154 | 131 | 69 | 20 x 2.50 | 1,900 | RAL ¹ | 25 |
| 302 7 068 | 62 - 68 | - | - | M10 | 102 | 80 | 44 | 20 x 2.00 | 1,500 | RAL ¹ | 50 |
| 302 7 076 | 72 - 76 | - | - | M10 | 109 | 87 | 48 | 20 x 2.00 | 1,500 | RAL ¹ | 25 |
| 302 7 085 | 79 - 85 | - | - | M10 | 118 | 96 | 52 | 20 x 2.00 | 1,500 | RAL ¹ | 25 |
| 302 7 089 | 85 - 89 | 3 | 80 | M10 | 124 | 102 | 55 | 20 x 2.00 | 1,500 | RAL ¹ | 25 |
| 302 7 105 | 100 - 105 | - | - | M10 | 139 | 117 | 62 | 20 x 2.00 | 1,500 | RAL ¹ | 25 |
| 302 7 111 | 106 - 111 | - | - | M10 | 146 | 124 | 66 | 20 x 2.50 | 1,900 | RAL ¹ | 25 |
| 302 7 118 | 110 - 118 | 4 | 100 | M10 | 154 | 132 | 70 | 20 x 2.50 | 1,900 | RAL ¹ | 25 |
| 302 7 127 | 122 - 127 | - | - | M10 | 163 | 140 | 74 | 20 x 2.50 | 1,900 | RAL ¹ | 25 |
| 302 7 134 | 129 - 134 | - | - | M10 | 170 | 148 | 78 | 20 x 2.50 | 1,900 | RAL ¹ | 25 |
| 302 7 144 | 139 - 144 | 5 | 125 | M10 | 179 | 157 | 83 | 20 x 2.50 | 1,900 | RAL ¹ | 25 |
| 302 7 155 | 150 - 155 | - | - | M10 | 192 | 172 | 91 | 20 x 2.50 | 1,900 | RAL ¹ | 25 |
| 302 7 162 | 157 - 162 | - | - | M10 | 196 | 174 | 91 | 20 x 2.50 | 1,900 | RAL ¹ | 25 |
| 302 7 169 | 164 - 169 | 6 | 150 | M10 | 203 | 181 | 95 | 20 x 2.50 | 1,900 | RAL ¹ | 25 |
| 302 7 200 | 193 - 200 | - | - | M10 | 256 | 216 | 112 | 25 x 2.50 | 1,900 | RAL ¹ | 15 |
| 302 7 219 | 212 - 219 | 8 | 200 | M10 | 273 | 233 | 121 | 25 x 2.50 | 1,900 | RAL ¹ | 15 |

RAL¹ = tested, certified and monitored by a third party according to RAL-GZ 655/B.

For detailed technical information about our RAL marked products, please see the RAL datasheet in our web catalogue.



Complementary

- BIS RapidRail[®] Stainless Steel Fixing Rail
- BIS RapidStrut[®] Stainless Steel Fixing Rail
- BIS Stainless Steel Hanger Bolt

Alternative

- BIS Bifix[®] 1301 Stainless Steel