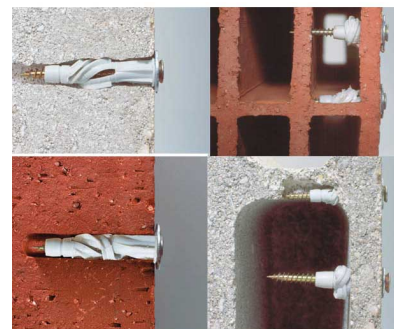
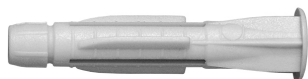


BIS ARAYPLAST

fixing to concrete, brick

(L 10 68)



Features and Benefits

- for light duty fixings to e.g. brick (hollow or solid), block wall (hollow), etc.
- with collar to prevent plug from falling into hollow space
- material: PE (polyethylene)

Part No.	L	HØ (mm)	Pack 1	Pack 2
6118331	50 mm	8	40	800
6118371	50 mm	8	600	6,000
6118411	60 mm	10	15	150

