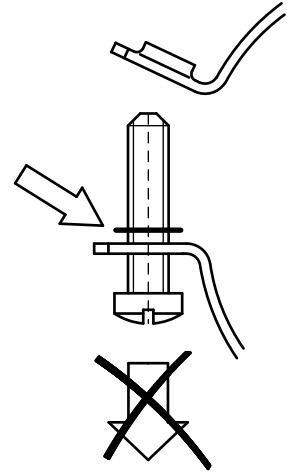


BIS 2S Clamp (M8/10)

(B 05 25)

for steel pipes 15 - 169 mm

M8/10



Features and Benefits

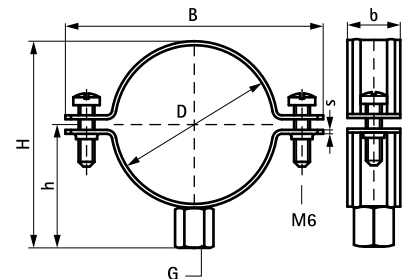
- two-screw clamp
- screws secured with anti-loss washer
- material: steel
- zinc plated



RAL-GZ 655/B
Cert.Nr. 2010-11

Part No.	D (mm)	D (°)	DN	G	B (mm)	H (mm)	h (mm)	b x s (mm)	F _{az} (N)	RAL	Pack 1
330 3 017	15 - 17	3/8	10	M8/10	51	34	25	20 x 1.25	1,110	RAL ¹	50
330 3 022	20 - 23	1/2	15	M8/10	58	40	29	20 x 1.25	1,110	RAL ¹	50
330 3 030	25 - 28	3/4	20	M8/10	66	48	33	20 x 1.25	1,110	RAL ¹	50
330 3 034	31 - 35	1	25	M8/10	71	52	36	20 x 1.25	1,110	RAL ¹	50
330 3 042	40 - 43	-	-	M8/10	79	60	40	20 x 1.25	1,110	RAL ¹	50
330 3 045	41 - 45	1 1/4	32	M8/10	79	63	36	20 x 1.25	1,240	RAL ¹	50
330 3 051	44 - 49	1 1/2	40	M8/10	87	68	44	20 x 1.25	1,240	RAL ¹	50
330 3 060	50 - 56	-	-	M8/10	93	76	47	20 x 1.25	1,240	RAL ¹	50
330 3 064	58 - 62	2	50	M8/10	100	82	50	20 x 1.25	1,240	RAL ¹	50
330 3 068	62 - 68	-	-	M8/10	105	87	53	20 x 1.25	1,240	RAL ¹	50
330 3 076	75 - 76	2 1/2	65	M8/10	114	94	56	20 x 2.00	1,470	RAL ¹	50
330 3 085	79 - 85	-	-	M8/10	123	102	60	23 x 1.50	1,470	RAL ¹	50
330 3 089	85 - 89	3	80	M8/10	129	108	63	23 x 1.50	1,470	RAL ¹	50
330 3 094	90 - 94	-	-	M8/10	134	113	66	23 x 1.50	1,470	RAL ¹	50
330 3 105	100 - 105	-	-	M8/10	144	123	71	23 x 1.50	1,470	RAL ¹	50
330 3 111	106 - 111	-	-	M8/10	149	128	73	23 x 1.50	1,800	RAL ¹	25
330 3 118	114 - 118	4	100	M8/10	158	138	78	23 x 2.00	1,800	RAL ¹	25
330 3 144	139 - 144	5	125	M8/10	183	163	90	23 x 2.00	1,800	RAL ¹	25
330 3 169	164 - 169	6	150	M8/10	207	188	103	23 x 2.00	1,800	RAL ¹	25

RAL¹ = tested, certified and monitored by a third party according to RAL-GZ 655/B.
For detailed technical information about our RAL marked products, please see the RAL datasheet in our web catalogue.



Complementary

- BIS RapidRail® Fixing System
- BIS Fixing Accessories
- BIS Fastenings

Alternative

- BIS 2S Clamp with Lining (M8, M8/10)
- BIS 2S Clamp (M8/10, G1/2")