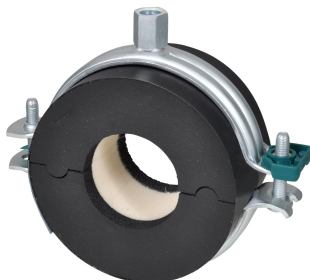


# BISOFIX® E19

(D 05 10)

for insulated pipes 12.0 - 219.1 mm

M8/10 - M16



## Features and benefits

- insulated pipe support with pipe clamp BIS Bifix® G2
- clamp with quick locking system
- for fixing of thermal isolated pipe of steel, copper or stainless steel
- vapour proof glueing to pipe insulation
- when installing the pipe support, always align the contact areas of the insulation shells horizontally (to prevent tensile and pressure forces)
- with self-adhesive strip for easy closing of pipe support
- material: steel clamp; pipe support made of PIR foam (core), synthetic rubber (sides) and a vapour-proof layer of black PVC
- does not contain CFC, HCFC, formaldehyde or cadmium
- excellent thermal and mechanical properties
- BIS Bifix G2 Clamp: surface protection:
  - product is part of the BIS UltraProtect® 1000 system
  - suitable for in- and outdoor applications
  - stands min. 1,000 hours salt spray test (max. 5% red rust) according to ISO 9227
- working temperature from -45 °C to +105 °C

Part No.	D (mm)	D (°)	DN	G	B (mm)	h (mm)	b (mm)	s (mm)	F <sub>a,z</sub> (N)	Pack 1
2211012	12.0	-	-	M8/10	91	44	50	19.5	100	18
2211015	15.0 - 16.0	-	-	M8/10	97	46	50	19.5	100	18
2211017	17.2 - 18.0	3/8	10	M8/10	97	48	50	19.0	100	18
2211021	21.3 - 22.0	1/2	15	M8/10	110	53	50	22.5	100	18
2211027	26.9 - 28.0	3/4	20	M8/10	118	56	50	22.5	100	12
2211035	35.0	1	25	M8/10	125	59	50	22.5	100	12
2211042	42.4	1 1/4	32	M8/10	134	65	50	23.5	150	12
2211048	48.3	1 1/2	40	M8/10	142	68	50	23.5	225	18
2211054	54.0	-	-	M8/10	148	71	50	23.5	225	18
2211060	60.3	2	50	M8/10	155	74	50	23.5	350	18
2211064	64.0	-	-	M8/10	155	76	50	23.5	350	18
2211070	70.0	-	-	M8/10	164	80	50	24.5	425	18
2211076	76.1	2 1/2	65	M8/10	172	83	50	24.5	575	18
2211089	88.9	3	80	M8/10	181	89	50	24.5	875	9
2211102	101.6	-	-	M8/10	201	99	50	28.0	1,000	30
2211108	108.0	-	-	M8/10	209	101	50	27.0	1,075	30
2211114	114.3	4	100	M8/10	217	106	50	26.5	1,250	30
2211133	133.0	-	-	M8/10	238	108	100	26.5	1,475	12
2211140	139.7	5	125	M8/10	248	119	100	26.5	1,700	12
2211159	159.0	-	-	M8/10	275	132	100	29.0	1,950	12
2211168	168.3	6	150	M8/10	261	128	100	21.5	2,125	12
2211219	219.1	8	200	M16	345	152	100	21.5	3,525	10 *

\* provided with BIS HD500 Clamp instead of BIS Bifix® G2.

### Complementary

- BIS RapidRail® Fixing System
- BIS Fixing Accessories
- BIS Fastenings