

# BIS Heavy Duty Clamp HD1501 (BUP1000)

(A 10 06)

for metal pipes 159 - 509 mm

M16



## Features and benefits

- two-part clamp with two locking bolts
- heavy design
- bolts secured with anti-loss washer
- with CO<sub>2</sub> welded connection nut
- material: steel
- sound insulating lining according DIN 4109
- noise reduction according to ISO 3822-1 up to 18 dB(A)
- surface protection:
  - product is part of the Walraven BIS UltraProtect® 1000 system
  - suitable for in- and outdoor applications
  - stands min. 1,000 hours salt spray test (max. 5% red rust) according to ISO 9227
- noise insulating lining, EPDM rubber, black
- age resistant lining

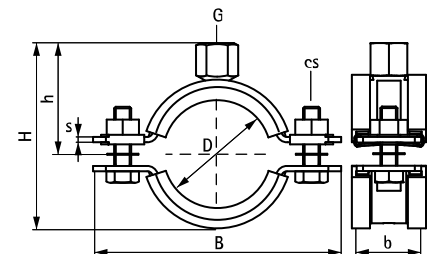


RAL-GZ 655/B  
Cert.Nr. 2011-12a

Part No.	D (mm)	D (°)	DN	G	B (mm)	H (mm)	h (mm)	b x s (mm)	cs	F <sub>a,z</sub> (N)	RAL	Pack 1
33168169	159 - 169	6	150	M16	254	220	120	38 x 4.0	M10	3,800	RAL <sup>1</sup>	15
33168188	178 - 188	-	-	M16	274	239	130	38 x 4.0	M10	3,800	RAL <sup>1</sup>	15
33168204	194 - 204	-	-	M16	290	255	138	38 x 4.0	M10	3,800	RAL <sup>1</sup>	15
33168213	203 - 213	-	-	M16	299	264	143	38 x 4.0	M10	3,800	RAL <sup>1</sup>	15
33168227	217 - 227	8	200	M16	322	278	150	38 x 4.0	M12	3,800	RAL <sup>1</sup>	2
33168250	240 - 250	-	-	M16	345	302	163	38 x 4.0	M12	3,800	RAL <sup>1</sup>	2
33168275	265 - 275	10	250	M16	367	327	175	48 x 5.0	M12	9,200	RAL <sup>1</sup>	2
33168325	315 - 325	12	300	M16	414	374	198	48 x 5.0	M12	9,200	RAL <sup>1</sup>	2
33168364	354 - 364	14	350	M16	453	412	217	48 x 5.0	M12	9,200	RAL <sup>1</sup>	2
33168408	398 - 408	16	400	M16	497	456	239	48 x 5.0	M12	9,200	RAL <sup>1</sup>	2
33168458	448 - 458	18	450	M16	548	506	264	48 x 5.0	M12	9,200	RAL <sup>1</sup>	2
33168509	499 - 509	20	500	M16	599	557	289	48 x 5.0	M12	9,200	RAL <sup>1</sup>	2

RAL<sup>1</sup> = tested, certified and monitored by a third party according to RAL-GZ 655/B.

For detailed technical information about our RAL marked products, please see the RAL datasheet in our web catalogue.



### Complementary

Walraven RapidStrut® Fixing System  
Walraven Fixing Accessories  
Walraven Fastenings

### Complementary

BIS Silicone Profile