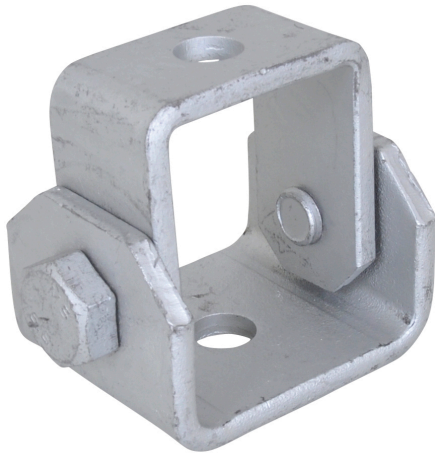


# BIS Adjustable Support

(H 12 55)

fixing to wall



## Features and benefits

- especially for angled installations with bracings
- suitable for fixing to walls or fixing rails
- adjustable angle up to 90°
- with two holes Ø13 mm
- material: steel
- surface protection:
  - product is part of the BIS UltraProtect® 1000 system
  - suitable for in- and outdoor applications
  - stands min. 1,000 hours salt spray test (max. 5% red rust) according to ISO 9227

| Part No. | L     | B    | H    | d1     | d2     | For Rail | F <sub>a,z</sub> | ST                     | Pack 1 |
|----------|-------|------|------|--------|--------|----------|------------------|------------------------|--------|
|          |       | (mm) | (mm) | (mm)   | (mm)   |          | (N)              |                        |        |
| 66588818 | 50 mm | 78   | 63   | Ø 13.0 | Ø 13.0 | Strut    | 5,000            | BIS UltraProtect® 1000 | 10     |

*Max. allowed load: when used at an angle of 45° on wall/ceiling.*

