

Walraven Strut Washer – Flat (BUP1000)

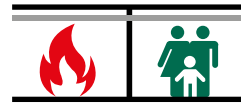
(H 24 80)

to make Strut rail fabrications



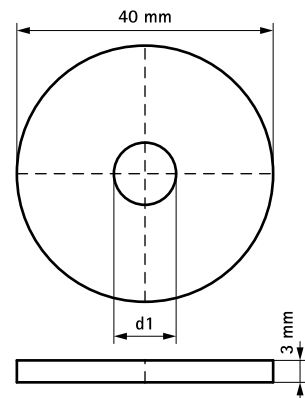
Features and benefits

- flat washer
- material: steel 1.0332
- surface protection:
 - product is part of the Walraven BIS UltraProtect® 1000 system
 - suitable for in- and outdoor applications
 - stands min. 1,000 hours salt spray test (max. 5% red rust) according to ISO 9227



Part No.	B (mm)	d1 (mm)	For Rail	Pack 1	Pack 2
65381508	40	Ø 8.4	Strut	50	250
65381510	40	Ø 10.5	Strut	50	250
65381512	40	Ø 13.0	Strut	50	250

Ø 10.5 and above tested for fire safety.
Also available in stainless steel 1.4401 (AISI 316).



Complementary

Walraven RapidStrut® Cantilever Arm
(BUP1000)
Walraven RapidStrut® Channel DS 5
(BUP1000)