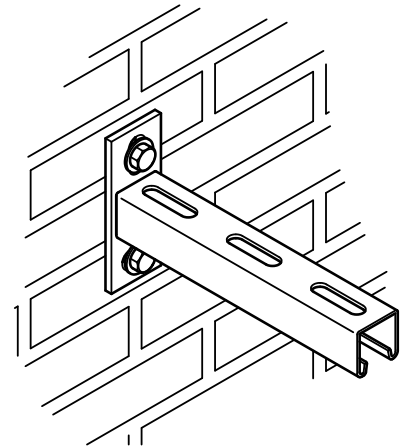
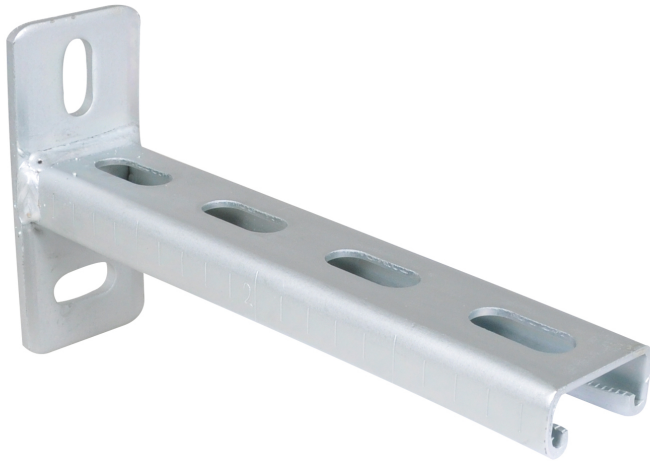


Walraven RapidStrut® Cantilever Arm (BUP1000)

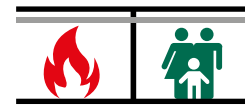
(H 08 05)

fixing to wall



Features and benefits

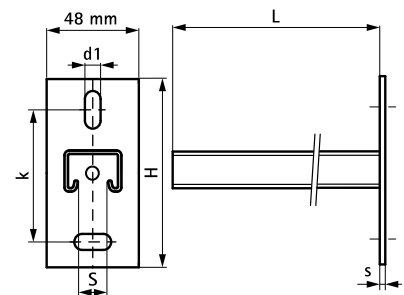
- wall plate welded on Strut Profile
- slots at 90° to each other to simplify fixing
- CO₂ welded
- inward formed flanges with serrated profile for extra grip
- material: steel 1.0226
- surface protection:
 - product is part of the Walraven BIS UltraProtect® 1000 system
 - suitable for in- and outdoor applications
 - stands min. 1,000 hours salt spray test (max. 5% red rust) according to ISO 9227
- strut 41x41x2.5 and above tested for fire safety according to EN 1366-1
- for more information about the max. allowed load ($F_{a,z}$) please refer to the loading tables or our online datasheet 'Walraven RapidStrut® Data Sheet'



Part No.	L	H	h	s	d1	S	k	From rail	Pack 1
		(mm)	(mm)	(mm)	(mm)	(mm)	(mm)		
6603831	200 mm	110	70.0	5.0	25 x 11	22	70.0	Strut 41x21x2.5	10
6603832	300 mm	110	70.0	5.0	25 x 11	22	70.0	Strut 41x21x2.5	10
6603833	450 mm	110	70.0	5.0	25 x 11	22	70.0	Strut 41x21x2.5	20
6603834	600 mm	110	70.0	5.0	25 x 11	22	70.0	Strut 41x21x2.5	10
6603923	300 mm	130	87.5	7.0	30 x 13	22	87.5	Strut 41x41x2.0	10
6603926	450 mm	130	87.5	7.0	30 x 13	22	87.5	Strut 41x41x2.0	10
6603928	600 mm	130	87.5	7.0	30 x 13	22	87.5	Strut 41x41x2.0	8
6603861	150 mm	130	87.5	7.0	30 x 13	22	87.5	Strut 41x41x2.5	10
6603870	200 mm	130	87.5	7.0	30 x 13	22	87.5	Strut 41x41x2.5	10
6603862	300 mm	130	87.5	7.0	30 x 13	22	87.5	Strut 41x41x2.5	10
6603871	400 mm	130	87.5	7.0	30 x 13	22	87.5	Strut 41x41x2.5	10
6603863	450 mm	130	87.5	7.0	30 x 13	22	87.5	Strut 41x41x2.5	10
6603873	500 mm	130	87.5	7.0	30 x 13	22	87.5	Strut 41x41x2.5	10
6603864	600 mm	130	87.5	7.0	30 x 13	22	87.5	Strut 41x41x2.5	8
6603865	750 mm	130	87.5	7.0	30 x 13	22	87.5	Strut 41x41x2.5	8
6603866	1,000 mm	130	87.5	7.0	30 x 13	22	87.5	Strut 41x41x2.5	-
6603867	1,200 mm	130	87.5	7.0	30 x 13	22	87.5	Strut 41x41x2.5	-

Strut 41x41x2.5 and above tested for fire safety according to EN 1366-1.

For more information about the max. allowed load ($F_{a,z}$) please refer to the loading tables or our online datasheet 'Walraven RapidStrut® Data Sheet'.



Complementary

Walraven Rail Prop (BUP1000)
Walraven Strut Rail End Cap