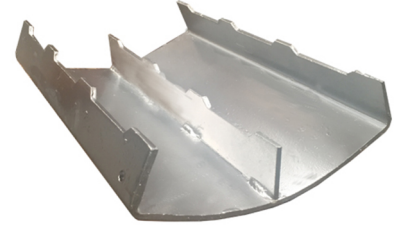


# Pipe Covering Protection Saddle

(D 15 355)

219 - 762 mm



## Features and benefits

- recommended to be used with insulated pipes
- protects the pipe insulation over pipe lines
- length: 300 mm
- material: steel
- electrogalvanized as per ASTM B 633 Standards (SC3)
- designed to meet MSS Standard SP-58, SP-69, type 39A and 39B

Part No.	D (mm)	D (°)	k (mm)	k1 (mm)	Insulation Thickness (mm)	Matching Roller Chair	F <sub>a,z</sub> (N)
DMPPS200-25	219	8	143	179	25	DMC166273	9,500
DMPPS200-50	219	8	169	211	50	DMC166323	9,500
DMPPS200-75	219	8	194	244	75	DMC166355	9,500
DMPPS250-25	273	10	170	212	25	DMC166323	12,500
DMPPS250-50	273	10	196	261	50	DMC166406	12,500
DMPPS250-75	273	10	221	288	75	DMC166457	12,500
DMPPS300-25	323	12	196	261	25	DMC166406	12,500
DMPPS300-50	323	12	222	289	50	DMC166457	12,500
DMPPS300-75	323	12	247	322	75	DMC166508	12,500
DMPPS350-25	356	14	212	277	25	DMC166406	29,000
DMPPS350-50	356	14	238	305	50	DMC166457	29,000
DMPPS350-75	356	14	263	339	75	DMC166508	29,000
DMPPS400-50	406	16	263	239	50	DMC166508	29,000
DMPPS400-75	406	16	289	365	75	DMC166558	29,000
DMPPS450-50	457	18	289	365	50	DMC166558	29,000
DMPPS450-75	457	18	315	393	75	DMC166610	29,000
DMPPS500-50	508	20	315	393	50	DMC166610	29,000
DMPPS500-75	508	20	340	425	75	DMC166660	29,000
DMPPS600-50	610	24	366	457	50	DMC166711	45,000
DMPPS600-75	610	24	392	489	75	DMC166762	45,000
DMPPS750-50	762	30	442	554	50	DMC166863	45,000
DMPPS750-75	762	30	468	588	75	DMC166914	45,000

Custom made heavy Pipe Covering Protection Saddles are available on request. See second image for an example.

