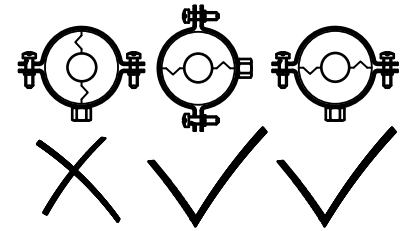
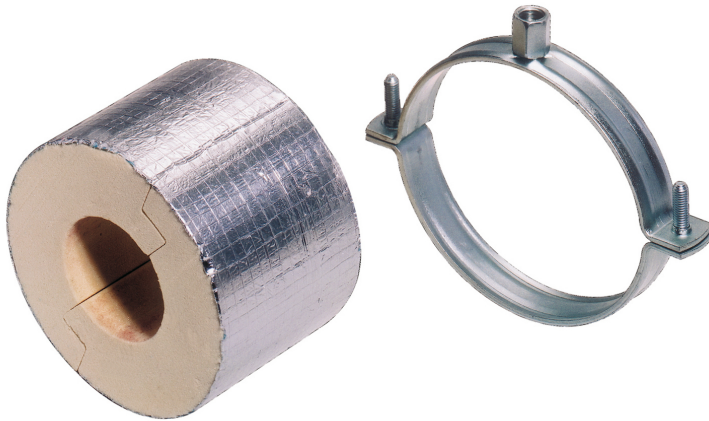


BISOFIX® PIR40

(D 05 25)

for insulated pipes 21.3 - 406.4 mm

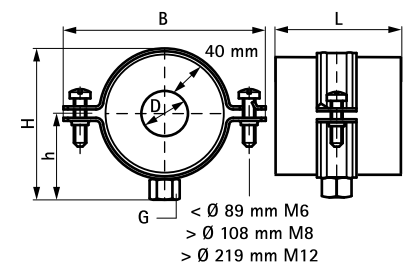
M8/10 - M16



Features and benefits

- insulation shell (thickness 40 mm) with pipe clamp BIS 2S
- for fixing of thermal isolated pipe of steel, copper or stainless steel
- to be used in combination with hard insulation material
- a vapour sealed connection with pipe insulation can easily be made by use of aluminium tape
- when installing the pipe support, always align the contact areas of the insulation shells horizontally (to prevent tensile and pressure forces)
- size and specific weight are tuned to pipe weight
- from pipe Ø 273 mm pipe support needed
- working temperature from -180 °C to +140 °C
- material: clamp of steel; insulation shell made of PIR thermally hardening foam with a moisture proof outer covering of glass-fibre reinforced aluminium foil
- does not contain CFC, HCFC, formaldehyde or cadmium
- excellent thermal and mechanical properties
- clamp: zinc plated

Part No.	D (mm)	D (°)	DN	G	L	B (mm)	H (mm)	h (mm)	F _{a,z} (N)	Pack 1
2214021	21.3 - 22.0	-	-	M8/10	75 mm	138	124	70	350	12
2214027	26.9 - 28.0	-	-	M8/10	75 mm	144	129	73	350	12
2214033	33.7 - 35.0	1	25	M8/10	75 mm	153	138	77	370	12
2214042	42.4	1¼	32	M8/10	75 mm	160	144	80	410	12
2214048	48.3	1½	40	M8/10	75 mm	169	153	84	430	24
2214054	54.0	-	-	M8/10	75 mm	169	153	84	520	24
2214060	60.3	2	50	M8/10	75 mm	178	163	89	470	24
2214070	70.0	-	-	M8/10	75 mm	187	171	93	510	24
2214076	76.1	2½	65	M8/10	75 mm	191	175	95	530	24
2214089	88.9	3	80	M8/10	75 mm	203	187	101	620	18
2214108	108.0	-	-	M8/10	75 mm	246	213	114	690	10
2214114	114.3	4	100	M8/10	100 mm	256	223	119	1,530	12
2214133	133.0	-	-	M8/10	100 mm	273	240	128	1,670	8
2214140	139.7	5	125	M8/10	100 mm	273	258	130	1,730	8
2214159	159.0	-	-	M16	100 mm	273	244	134	2,850	24
2214168	168.3	6	150	M16	100 mm	306	266	138	2,960	24
2214219	219.1	8	200	M16	150 mm	388	333	174	4,510	6
2214273	273.1	10	250	M16	150 mm	436	381	198	5,320	6
2214324	323.9	12	300	M16	150 mm	486	431	223	6,090	1
2214406	406.4	16	400	M16	150 mm	569	514	264	7,330	1



Complementary

- BIS Fixing Accessories
- BIS Fastenings
- BISOFIX® PIR Support Sleeve