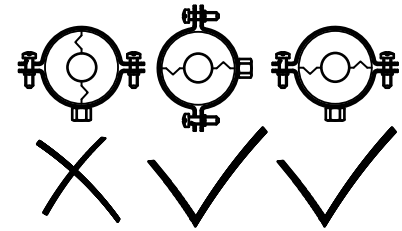
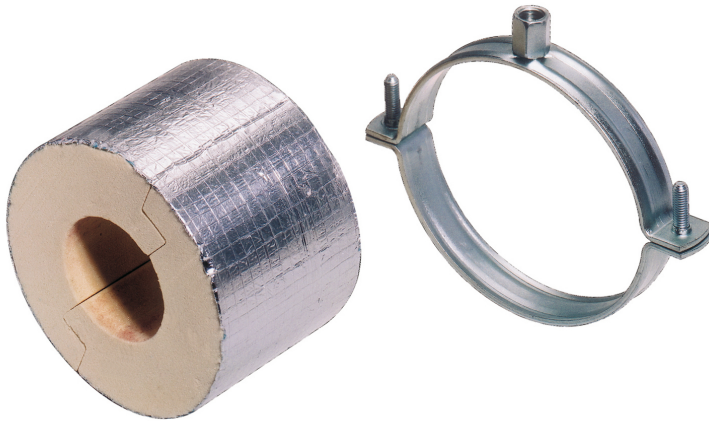


## BISOFIX® PIR50

for insulated pipes 33.7 - 323.9 mm

M8/10 - M16

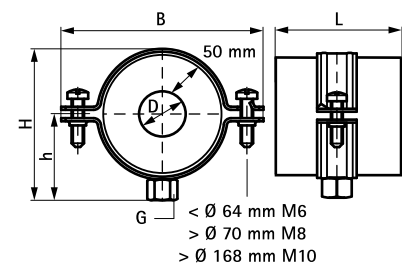
(D 05 30)



### Features and benefits

- insulation shell (thickness 50 mm) with pipe clamp BIS 2S
- for fixing of thermal isolated pipe of steel, copper or stainless steel
- to be used in combination with hard insulation material
- a vapour sealed connection with pipe insulation can easily be made by use of aluminium tape
- when installing the pipe support, always align the contact areas of the insulation shells horizontally (to prevent tensile and pressure forces)
- size and specific weight are tuned to pipe weight
- from pipe Ø 273 mm pipe support needed
- working temperature from -180 °C to +140 °C
- material: clamp of steel; insulation shell made of PIR thermally hardening foam with a moisture proof outer covering of glass-fibre reinforced aluminium foil
- does not contain CFC, HCFC, formaldehyde or cadmium
- excellent thermal and mechanical properties
- clamp: zinc plated

Part No.	D (mm)	D (°)	DN	G	L	B (mm)	H (mm)	h (mm)	F <sub>a,z</sub> (N)	Pack 1
2215033	33.7 - 35.0	1	25	M8/10	75 mm	169	155	85	370	24
2215042	42.4	1¼	32	M8/10	75 mm	178	165	90	470	24
2215048	48.3	1½	40	M8/10	75 mm	187	171	93	500	24
2215054	54.0	-	-	M8/10	75 mm	191	175	95	520	24
2215060	60.3	2	50	M8/10	75 mm	196	180	98	540	24
2215064	63.5 - 64.0	-	-	M8/10	75 mm	196	185	100	550	24
2215076	76.1	2½	65	M8/10	75 mm	233	200	108	650	10
2215089	88.9	3	80	M8/10	75 mm	246	213	114	690	10
2215108	108.0	-	-	M8/10	75 mm	256	233	124	760	10
2215114	114.3	4	100	M8/10	100 mm	273	240	128	1,680	8
2215133	133.0	-	-	M16	100 mm	272	251	131	2,780	24
2215140	139.7	5	125	M16	100 mm	303	259	135	2,860	24
2215159	159.0	-	-	M16	100 mm	328	277	143	3,090	10
2215168	168.3	6	150	M16	100 mm	348	291	151	3,200	10
2215219	219.1	8	200	M16	150 mm	347	393	181	4,810	6
2215273	273.1	10	250	M16	150 mm	450	395	205	5,620	6
2215324	323.9	12	300	M16	150 mm	501	446	230	6,390	1



### Complementary

- BIS Fixing Accessories
- BIS Fastenings
- BISOFIX® PIR Support Sleeve