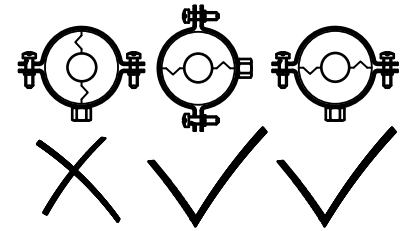
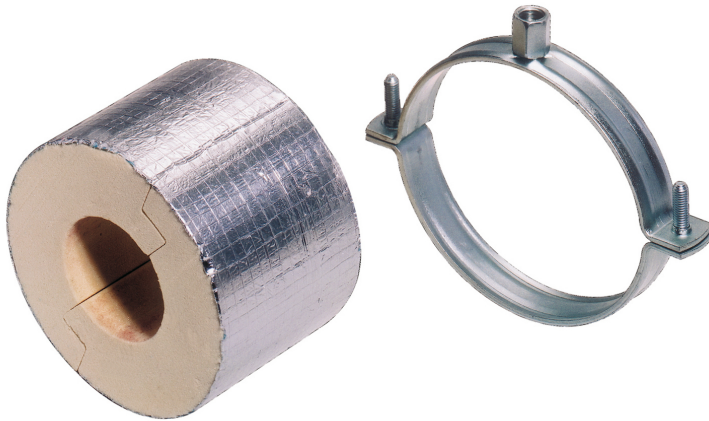


BISOFIX® PIR20

(D 05 15)

for insulated pipes 15.0 - 139.7 mm

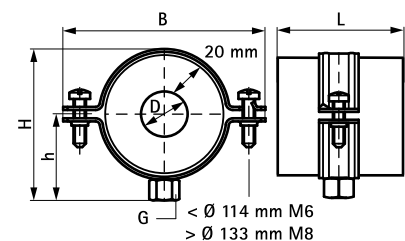
M8/10



Features and benefits

- insulation shell (thickness 20 mm) with pipe clamp BIS 2S
- for fixing of thermal isolated pipe of steel, copper or stainless steel
- to be used in combination with hard insulation material
- a vapour sealed connection with pipe insulation can easily be made by use of aluminium tape
- when installing the pipe support, always align the contact areas of the insulation shells horizontally (to prevent tensile and pressure forces)
- size and specific weight are tuned to pipe weight
- working temperature from -180 °C to +140 °C
- material: clamp of steel; insulation shell made of PIR thermally hardening foam with a moisture proof outer covering of glass-fibre reinforced aluminium foil
- does not contain CFC, HCFC, formaldehyde or cadmium
- excellent thermal and mechanical properties
- clamp: zinc plated

| Part No. | D (mm) | D (°) | DN | G | L | B (mm) | H (mm) | h (mm) | F _{a,z} (N) | Pack 1 |
|----------|-------------|----------|-----|-------|--------|-----------|-----------|-----------|-------------------------|--------|
| 2212015 | 15.0 - 16.0 | - | - | M8/10 | 75 mm | 92 | 76 | 46 | 160 | 12 |
| 2212017 | 17.2 - 18.0 | 3/8 | 10 | M8/10 | 75 mm | 92 | 76 | 46 | 170 | 12 |
| 2212021 | 21.3 - 22.0 | 1/2 | 15 | M8/10 | 75 mm | 91 | 81 | 48 | 180 | 12 |
| 2212027 | 26.9 - 28.0 | 3/4 | 20 | M8/10 | 75 mm | 102 | 91 | 53 | 200 | 12 |
| 2212033 | 33.7 - 35.0 | 1 | 25 | M8/10 | 75 mm | 109 | 98 | 57 | 220 | 12 |
| 2212042 | 42.0 | 1 1/4 | 32 | M8/10 | 75 mm | 117 | 104 | 60 | 280 | 12 |
| 2212048 | 48.3 | 1 1/2 | 40 | M8/10 | 75 mm | 123 | 112 | 63 | 300 | 12 |
| 2212054 | 54.0 | 1 1/2 | - | M8/10 | 75 mm | 129 | 113 | 64 | 320 | 12 |
| 2212057 | 56.0 - 57.0 | - | - | M8/10 | 75 mm | 129 | 117 | 66 | 330 | 12 |
| 2212060 | 60.3 | 2 | 50 | M8/10 | 75 mm | 138 | 123 | 69 | 340 | 12 |
| 2212064 | 63.5 - 64.0 | - | - | M8/10 | 75 mm | 138 | 125 | 70 | 350 | 12 |
| 2212070 | 70.0 | - | - | M8/10 | 75 mm | 144 | 132 | 74 | 370 | 12 |
| 2212076 | 76.1 | 2 1/2 | 65 | M8/10 | 75 mm | 153 | 138 | 77 | 390 | 12 |
| 2212089 | 88.9 | 3 | 80 | M8/10 | 75 mm | 169 | 153 | 84 | 430 | 24 |
| 2212108 | 108.0 | - | - | M8/10 | 75 mm | 187 | 171 | 93 | 500 | 24 |
| 2212114 | 114.3 | 4 | 100 | M8/10 | 100 mm | 191 | 175 | 95 | 1,110 | 18 |
| 2212133 | 133.0 | - | - | M8/10 | 100 mm | 233 | 200 | 108 | 1,360 | 8 |
| 2212140 | 139.7 | 5 | 125 | M8/10 | 100 mm | 233 | 204 | 110 | 1,410 | 8 |



Complementary

- BIS Fixing Accessories
- BIS Fastenings
- BISOFIX® PIR Support Sleeve