

# BIS Heavy Duty Clamp HD1501 (BUP1000)

(A 1004)

for metal pipes 15 - 227 mm

M8/10 - M10/12



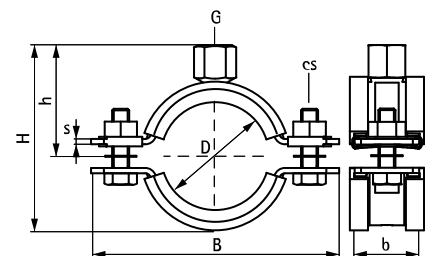
## Features and benefits

- two-part clamp with two locking bolts
- up to and including 5": locking nut is captive, hidden in plastic holder
- heavy design
- bolts secured with anti-loss washer
- with CO<sub>2</sub> welded connection nut
- material: steel
- noise insulating lining, EPDM rubber, black
- also available: noise insulating lining of silicone rubber (reddish brown), heat resistant up to +200 °C (A 35 15)
- age resistant lining
- surface protection:
  - product is part of the BIS UltraProtect® 1000 system
  - suitable for in- and outdoor applications
  - stands min. 1,000 hours salt spray test (max. 5% red rust) according to ISO 9227
- sound insulating lining according DIN 4109
- noise reduction according to ISO 3822-1 up to 18 dB(A)
- tested for fire safety



Part No.	D (mm)	D (")	DN	G	B (mm)	H (mm)	h (mm)	b x s (mm)	cs	F <sub>a,z</sub> (N)	RAL	Pack 1
33138019	15 - 19	3/8	10	M8/10	81	55	35	30 x 2.5	M8	1,500	RAL <sup>2</sup>	25
33138023	19 - 23	1/2	15	M8/10	84	58	37	30 x 2.5	M8	1,500	RAL <sup>2</sup>	25
33138029	25 - 29	3/4	20	M8/10	91	64	40	30 x 2.5	M8	1,500	RAL <sup>2</sup>	25
33138035	30 - 35	1	25	M8/10	98	70	43	30 x 2.5	M8	1,500	RAL <sup>2</sup>	25
33138045	40 - 45	1 1/4	32	M8/10	109	80	48	30 x 2.5	M8	1,500	RAL <sup>2</sup>	25
33138051	46 - 51	1 1/2	40	M8/10	115	86	51	30 x 2.5	M8	1,500	RAL <sup>2</sup>	25
33138059	53 - 59	-	-	M8/10	122	93	55	30 x 2.5	M8	1,500	RAL <sup>2</sup>	25
33138064	59 - 64	2	50	M8/10	129	99	57	30 x 2.5	M8	1,500	RAL <sup>2</sup>	25
33148071	65 - 71	-	-	M10/12	136	116	71	30 x 3.0	M8	2,300	RAL <sup>2</sup>	25
33148078	72 - 78	2 1/2	65	M10/12	144	123	74	30 x 3.0	M8	2,300	RAL <sup>2</sup>	25
33148085	79 - 85	-	-	M10/12	152	130	78	30 x 3.0	M8	2,300	RAL <sup>2</sup>	25
33148092	86 - 92	3	80	M10/12	159	136	81	30 x 3.0	M8	2,300	RAL <sup>2</sup>	25
33148109	101 - 109	-	-	M10/12	175	154	90	30 x 3.0	M8	2,300	RAL <sup>2</sup>	25
33148116	108 - 116	4	100	M10/12	182	160	93	30 x 3.0	M8	2,300	RAL <sup>2</sup>	25
33148133	125 - 133	-	-	M10/12	200	178	102	30 x 3.0	M8	2,300	RAL <sup>2</sup>	25
33148140	132 - 140	5	125	M10/12	207	184	104	30 x 3.0	M8	2,300	RAL <sup>2</sup>	15
33148169	159 - 169	6	150	M10/12	254	223	124	38 x 4.0	M10	3,800	RAL <sup>2</sup>	15
33148188	178 - 188	-	-	M10/12	274	242	133	38 x 4.0	M10	3,800	RAL <sup>2</sup>	15
33148204	194 - 204	-	-	M10/12	290	258	141	38 x 4.0	M10	3,800	RAL <sup>2</sup>	15
33148213	203 - 213	-	-	M10/12	299	267	146	38 x 4.0	M10	3,800	RAL <sup>2</sup>	15
33148227	217 - 227	8	200	M10/12	322	282	152	38 x 4.0	M12	3,800	RAL <sup>2</sup>	2

RAL<sup>2</sup> = tested, certified and monitored by a third party according to RAL-GZ 655/B and RAL-GZ 656.  
For detailed technical information about our RAL marked products, please see the RAL datasheet in our web catalogue.



## Complementary

- BIS RapidStrut® Fixing System
- BIS Fixing Accessories
- BIS Fastenings