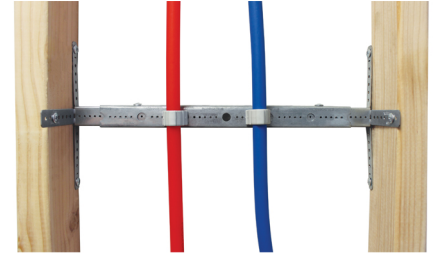
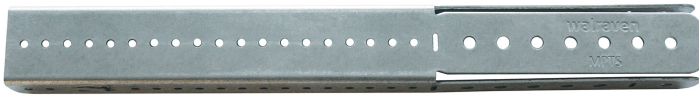


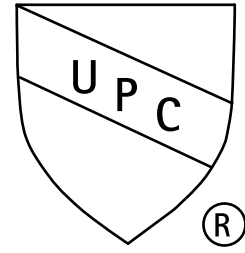
Multi-Purpose Telescoping Support (MPTS) Insert

(02 05 216)



Features and benefits

- can be used to make a custom length in-wall bracket when paired with WMO strut
- can be used as a cantilever or to attach strut in between walls
- features 3 fixing points to support any length of WMO strut
- easily customizable
- use to attach custom size WMO strut in a narrow, confined space
- material: steel 1.0242
- pre-galvanized



| Part No. | Size | Pack 1 | App. |
|----------|------------------|--------|------|
| 59492000 | 8" x 3/4" x 1/2" | 50 | pc. |