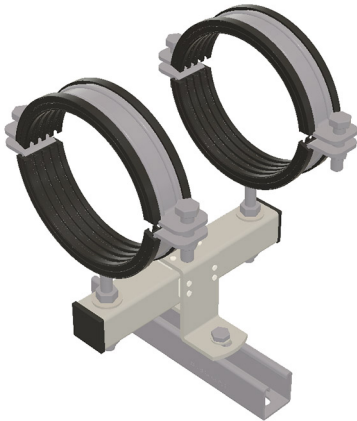
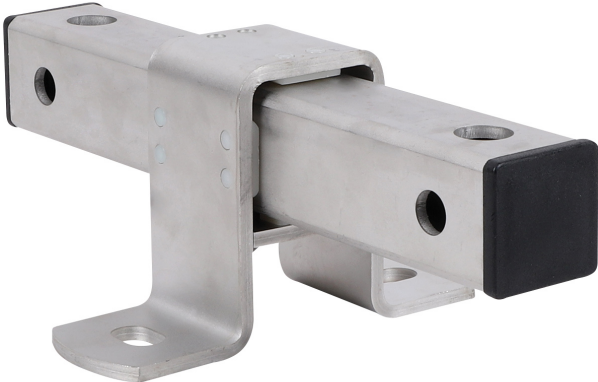


BIS Stainless Steel Expansion Guide Assembly

(M 19 10)

fixing with sliding assemblies



Features and benefits

- stable and safe double support for pipe expansion
- fix directly on the building structure or in combination with rail systems
- suitable for ceiling mounting (suspended) and floor mounting (standing mounted)
- tapped with different sized connecting holes (13/17 mm) on opposing faces
- can be combined with HD1501 or HD500 clamps
- material: metal parts made of stainless steel 1.4404 (A4) - EN 10088, AISI 316; sliding strips made of PE colour white, endcaps made of PE colour black

Part No.	Type	G	L	L	B	B	H	H	b	b	s	s	d1	d1	k	k	k1	k1	SL (max.)	F _{a,z} (N)	F _{a,z} (lbf)	Pack 1
6667813	FG 3	1/2"	255 mm	9.64	146	5.98	90	3.54	40	1.57	5.0	0.19	20 x 13	0.91 x 0.51	200	7.87	100	4.13	4.12	7,500	1,700	5

