

BIS Expansion Guide Assembly (BUP1000)

(E 10 40)

fixing with sliding assemblies



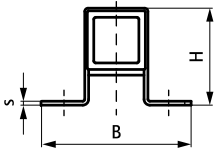
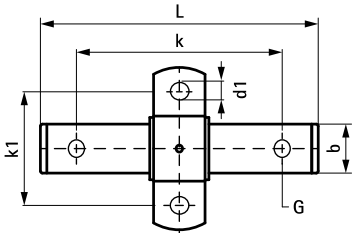
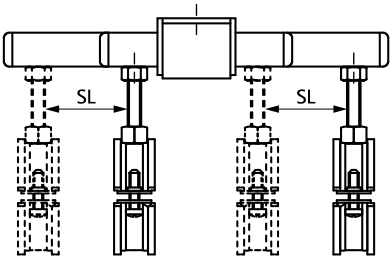
666 8 612

666 8 813

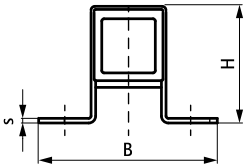
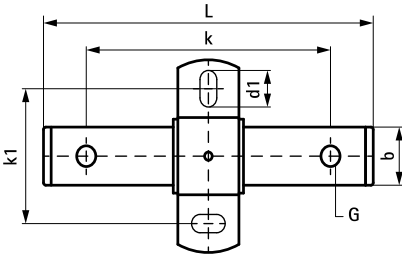
Features and benefits

- stable and safe double support for pipe expansion
- fix directly on the building structure or in combination with rail systems
- suitable for ceiling mounting (suspended) and floor mounting (standing mounted)
- tapped with different sized threads on opposing faces
- a variety of connection possibilities, can be combined with Bifix® G2 or HD1501 Pipe Clamps
- material: metal parts made of steel; plastic parts made of PE
- surface protection:
 - product is part of the Walraven BIS UltraProtect® 1000 system
 - suitable for in and outdoor applications
 - stands min. 1,000 hours salt spray test (max. 5% red rust) according to ISO 9227

Part No.	Type	G	L	B	H	b	s	d1	k	k1	SL (max.)	F _{a,z} (lbf)	Pack 1
6668612	FG2		6.30"	5.31	1.81	1.37	0.12		4.72	3.93	2.36	337	5
6668813	FG3	1/2"	9.64"	5.98	3.54	1.57	0.19	0.91 x 0.51	7.87	3.93	4.12	1,700	5



666 8 612



666 8 813