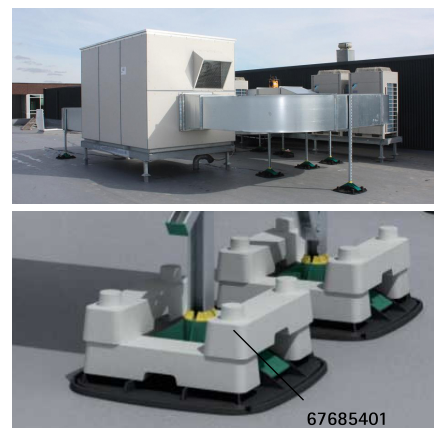


Walraven Yeti® 480 Support System

for Rooftop Installations

(1 04 05)



Features and benefits

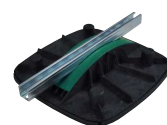
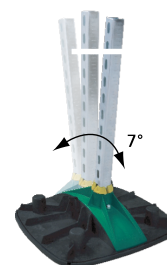
- modular supporting system for HVAC equipment, solar panels, walkways, pipe work, cable runs, etc.
- for flat and low pitched roofs
- adjustable up to 7° to compensate roof pitch
- 360° rotatable insert for BIS RapidStrut® 41x41 or BIS RapidStrut® DS 5 (41x52 mm)
- with non-slip anti-vibration mat (at PVC roofs a separating layer must be installed to protect against plasticizer migration - see Walraven BIS Yeti® Triplex Separation Layer)
- with optional stackable ballast block for increased weight / stability
- noise reduction according to DIN EN ISO 10140-1 and DIN EN ISO 10140-3 up to 31 dB(A)
- UV-resistance according to EN ISO 16474-3:2014-02 - certified by ITB
- mouldings made of WPC, a composite of recycled plastic and wood fibre
- resistant to UV and chemical influences



Nr.
1762-001-19



ITB No.
LZM00-02259



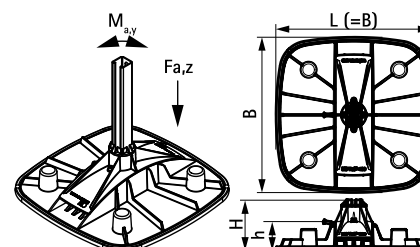
Part No.	Model	L	B	H	h	F _{a,z} (N)	F _{a,z} (kg)	F _{a,z 2} (N)	M _{a,y} (Nm)
67685001	Vertical	480 mm	480	160	80	20,000*	2,000*	30,000**	200.0
67685101	Horizontal	480 mm	480	-	-	20,000*	2,000*	30,000**	200.0

* = Maximum allowed load for Strut 41x41x2.5.

** = Maximum allowed load for Strut 41x51x2.0 - DS5.

For a detailed calculation and for support how to spread the load please contact Walraven Technical Support.

In cases where a foot is used in roof applications, the installer is obliged to verify maximum load capacity of roof before installation.



Complementary

Walraven Yeti® Ballast Block

Walraven Yeti® Triplex Separation Layer