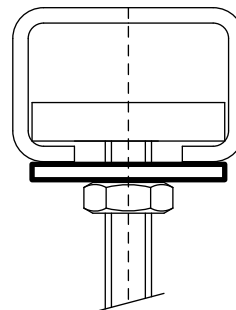


# Walraven Washer (Flat)

(G 30 75)

fixing to Walraven RapidRail®



## Features and benefits

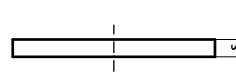
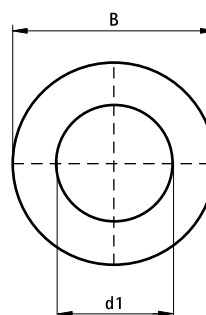
- suitable for rail 27x18, 30x15, 30x20, 30x30, 30x45, 38x40
- zinc plated
- material: steel
- tested for fire safety



Part No.	B (mm)	s (mm)	d1 (mm)	For Rail	Pack 1	Pack 2
6533306	25	2.5	Ø 6.4	27x18, 30x15, 30x20, 30x30, 30x45, 38x40	100	1.000
6533308	25	2.5	Ø 8.4	27x18, 30x15, 30x20, 30x30, 30x45, 38x40	100	1,000
6533310	25	2.5	Ø 10.5	27x18, 30x15, 30x20, 30x30, 30x45, 38x40	100	1,000
6533312	25	2.5	Ø 13.0	27x18, 30x15, 30x20, 30x30, 30x45, 38x40	100	1.000
6533316	30	3.0	Ø 17.0	27x18, 30x15, 30x20, 30x30, 30x45, 38x40	100	2.500

*Tested for fire safety.*

*Part No. 6533306 not tested for fire safety.*



## Complementary

Walraven RapidRail® Cantilever Arm  
Walraven RapidRail® Fixing Rail