

Walraven Square Slide Nut

fixing to Walraven RapidRail®

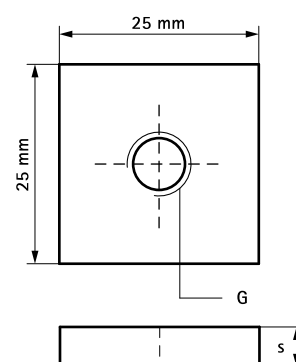
(G 30 20)



Features and benefits

- suitable for rail 30x15, 30x20, 30x30, 30x45, 38x40
- material: steel 1.0332
- zinc plated
- because of shape the nut fits in rail

Part No.	G	s (mm)	T _(inst.) (Nm)	For Rail	Pack 1	Pack 2
6519910	M6	4.0	7.5	27x18, 30x15, 30x20, 30x30, 30x45, 38x40	50	250
6519911	M8	4.0	15.0	27x18, 30x15, 30x20, 30x30, 30x45, 38x40	50	250
6519912	M10	5.0	15.0	27x18, 30x15, 30x20, 30x30, 30x45, 38x40	50	250
6519913	M12	5.0	-	27x18, 30x15, 30x20, 30x30, 30x45, 38x40	50	250



Complementary

Walraven RapidRail® Cantilever Arm
Walraven RapidRail® Fixing Rail