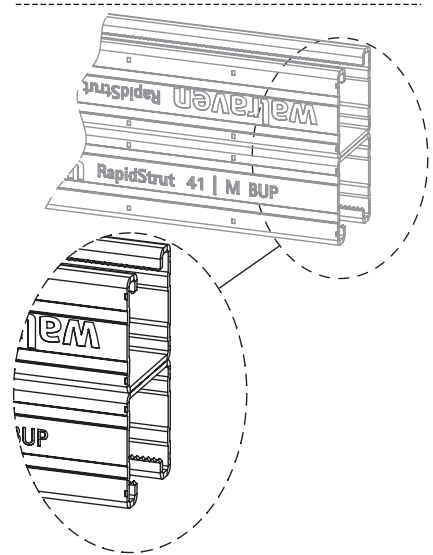
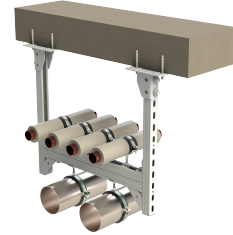


# Walraven RapidStrut® Channel Double (BUP1000)

(H 04 50)

for medium weight fixing applications



## Features and benefits

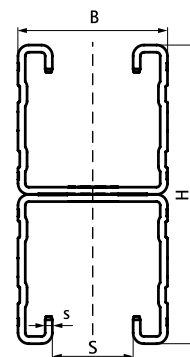
- universal rail system
- with continuous perforation
- inward formed flanges with serrated profile for extra grip
- with sawing marks each 50 mm on both sides
- material: steel 1.0242 (S250GD)
- surface protection:
  - product is part of the Walraven BIS UltraProtect® 1000 system
  - suitable for in- and outdoor applications
  - stands min. 1,000 hours salt spray test (max. 5% red rust) according to ISO 9227
- version 62|H Double tested for fire safety
- for more information about the max. allowed load ( $F_{a,z}$ ) please refer to the loading tables or our online datasheet 'Walraven RapidStrut® Data Sheet'



62|H Double only

Part No.	L	B (mm)	H (mm)	s (mm)	S (mm)	BndS	App.
65018626	6 m	41	42 (21x2)	2.00	22	150	m.
65018646	6 m	41	82 (41x2)	2.00	22	150	m.
65018666	6 m	41	124 (62x2)	2.50	22	90	m.

For more information about the max. allowed load ( $F_{a,z}$ ) please refer to the loading tables or our online datasheet 'Walraven RapidStrut® Data Sheet'.



## Complementary

- Walraven RapidStrut® Slide Nut G2 (BUP1000)
- Walraven RapidStrut® Hammerfix G2 (BUP1000)
- Walraven Strut Washer - U-shaped

## Alternative

- Walraven RapidStrut® Channel Double (pg)