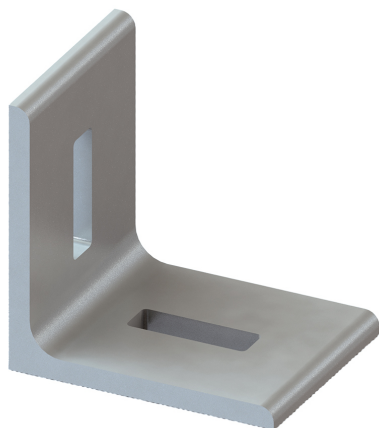


## Walraven Maxx Profile Connector 90°

(H2 05 17)

to make Maxx rail fabrications



### Features and benefits

- 2-hole connector for Maxx profiles
- made of L-steel for extra stability
- material: steel S235JR
- hot dip galvanized
- packed per piece

Part No.	Model	Type	L	B	H	s	d1	F <sub>a,x</sub> (N)	Pack 1
				(mm)	(mm)	(mm)	(mm)		
6681010	2 holes	AC80/90-2	100 mm	80	100	8.0	45 x 14	5,000*	-

\* = When using the connector with 1 pc. Maxx Hammerfix (65219214)

