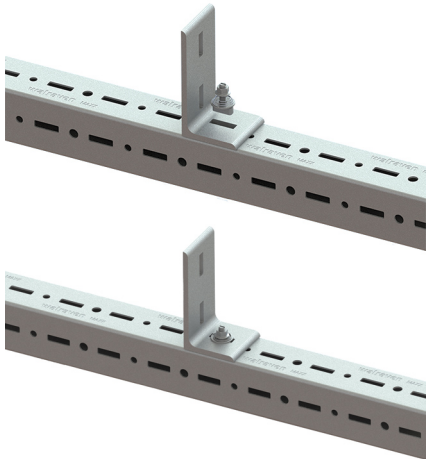
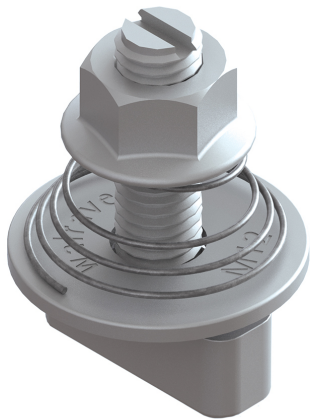


Walraven Maxx Hammerfix

for fixing to Maxx Heavy Rail Profiles

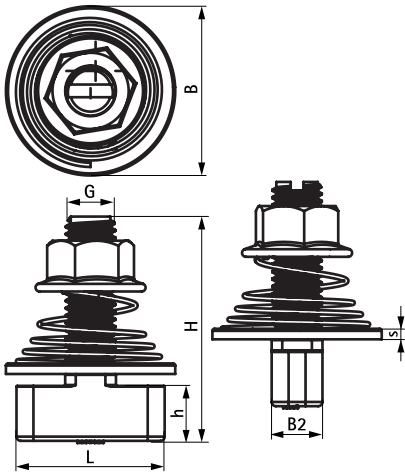
(H2 05 26)



Features and benefits

- form-locking connector
- retains assembly in place before final tightening
- pre-assembled and ready to use for a quick fixing in profile perforation by a push and 90° turn
- with visible mark on top to see the position of hammer end
- with square shaft to block in the profile hole pattern when tightening
- material: steel, strength class 8.8; spring made of stainless steel (AISI 316)
- hot dip galvanized

Part No.	Type	G	L	B (mm)	B2 (mm)	H (mm)	h (mm)	s (mm)	T _{inst} (Nm)	F _{a,z} (N)	Pack 1
65219214	HF	M12	35	40	12	53	12.8	2.5	75.0	14,500	25



Complementary
Walraven Maxx Heavy Rail Profile
Walraven Maxx Base Plate
Walraven Maxx Profile Connector 90°

Complementary
Walraven Maxx T-Connector
Walraven Maxx Linear Connector Set
Walraven Maxx U-Shape Bracket