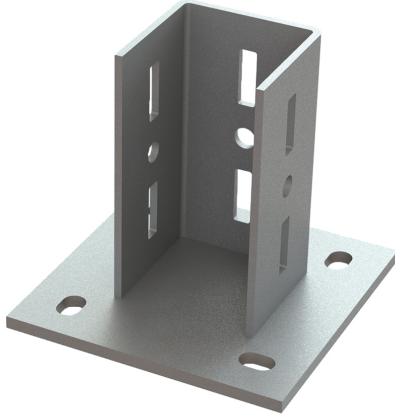


## Walraven Maxx Base Plate

(H2 05 11)

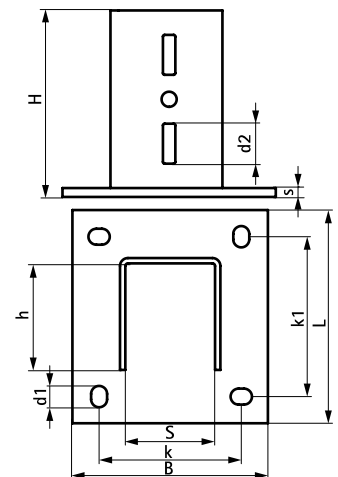
to connect Maxx profiles to wall, floor or ceilings



### Features and benefits

- U-saddle welded on large base plate
- for connecting Maxx profiles to wall, floor or ceiling
- slots are compatible with mounting profiles
- CO<sub>2</sub> welded
- material: base plate made of steel (type S275); U-part made of steel (type S235)
- hot dip galvanized

| Part No. | Type  | L      | B    | H    | h    | s    | d1      | d2      | S    | k    | k1   | Pack 1 |
|----------|-------|--------|------|------|------|------|---------|---------|------|------|------|--------|
|          |       | (mm)   | (mm) | (mm) | (mm) | (mm) | (mm)    | (mm)    | (mm) | (mm) | (mm) |        |
| 6581818  | BP80  | 185 mm | 185  | 210  | 80   | 10.0 | 25 x 14 | 45 x 14 | 81   | 130  | 130  | -      |
| 6581820  | BP100 | 220 mm | 220  | 210  | 100  | 10.0 | 24 x 18 | 45 x 14 | 101  | 160  | 160  | -      |
| 6581821  | BP120 | 240 mm | 220  | 210  | 120  | 10.0 | 24 x 18 | 45 x 14 | 101  | 160  | 180  | -      |



### Complementary

Walraven Maxx Heavy Rail Profile  
Walraven Maxx Hammerfix