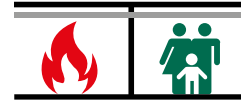


WTB1 Throughbolt Anchor SSt

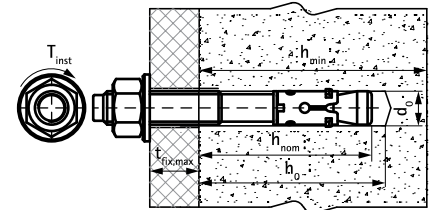
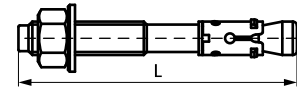
(M 95 22)

high performance stainless steel expansion anchor for cracked concrete



Features and benefits

- high load capacity
- pre- and through-fixing
- made of stainless steel for use in external atmospheric environment
- two embedment depths provide installation flexibility
- ETA Option 1 approval for cracked and non-cracked concrete
- fire resistance class R30-R120 for design of anchorages under exposure to fire
- material: stainless steel, A4
- substrate type:
 - cracked concrete
 - non-cracked concrete
 - stone



Part No.	Code	Size	L	d ₀	h ₀	h _{min}	h _{nom}	t _{fix,max}	Rec. Tension Load C20/25 Uncracked Concrete (kN)	Rec. Tension Load C20/25 Cracked Concrete (kN)	Pack 1
				(mm)	(mm)	(mm)	(mm)	(mm)			
609871080	WTB1 SSt 8x75	M8	75 mm	8	55	100	55	10	3.57*	2.38*	100
609871081	WTB1 SSt 8x115	M8	115 mm	8	55	100	55	50	3.57*	2.38*	100
609871100	WTB1 SSt 10x95	M10	95 mm	10	69	100	69	15	7.62*	4.29*	50
609871101	WTB1 SSt 10x130	M10	130 mm	10	69	100	69	50	7.62*	4.29*	50
609871120	WTB1 SSt 12x125	M12	125 mm	12	80	140	80	30	11.90*	5.71*	50
609871121	WTB1 SSt 12x150	M12	150 mm	12	80	140	80	55	11.90*	5.71*	50

* Recommended loads: are stated for single anchors; apply to anchors correctly installed at maximum embedment depth; include partial safety factor and an overall partial safety factor for action of 1.4.
 The partial safety factor for action depends on the type of loading and shall be taken from national regulations. All anchor failure modes and the entire relevant product European Technical Assessment must be considered for anchor design.
 For more information, please refer to the ETA report.

Complementary

- WIS Brush
- WIS Blow Pump
- WDI1 SD Stop Drill Bit

Complementary

- WSDS+ 3CE Concrete Drill Bit