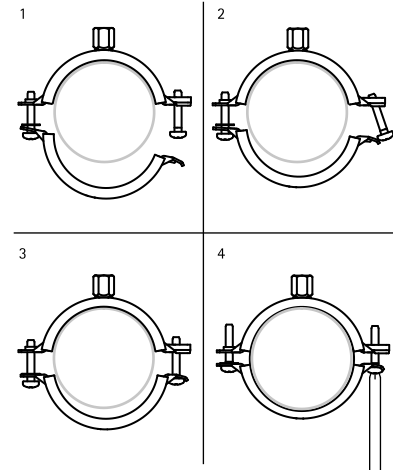


Bifix® G2 with Lining (M10) (BUP1000)

(A 05 72)

for steel, copper, cast iron and plastic (multilayer) pipe 10 - 225 mm

M10



Features and benefits

- two-screw clamp
- quick closing mechanism for easy locking of the clamp with one hand
- 2 component rubber lining provides easy positioning of the pipe during installation
- when the clamp is closed, the pipe rests on soft black rubber lining for increased noise reduction
- material: steel
- temperature resistance from -30 °C to +120 °C
- surface protection:
 - product is part of the Walraven BIS UltraProtect® 1000 system
 - suitable for in- and outdoor applications
 - stands min. 1,000 hours salt spray test (max. 5% red rust) according to ISO 9227
- sound insulating lining according DIN 4109
- noise reduction according to ISO 3822-1 up to 23 dB(A)



Part No.	D (mm)	D (°)	DN	G	B (mm)	H (mm)	h (mm)	b x s (mm)	cs	F _{a,z} (N)	Pack 1
31285014	10 - 14	1/4	8	M10	59	34	21	20 x 1.25	M6	800	50
31285019	15 - 19	3/8	10	M10	63	38	23	20 x 1.25	M6	800	50
31285023	20 - 23	1/2	15	M10	68	43	25	20 x 1.25	M6	800	50
31285028	25 - 28	3/4	20	M10	74	49	28	20 x 1.25	M6	800	50
31285035	31 - 35	1	25	M10	80	55	31	20 x 1.25	M6	800	50
31285039	36 - 39	-	-	M10	84	59	33	20 x 1.25	M6	800	50
31285045	40 - 45	1 1/4	32	M10	91	66	37	20 x 1.25	M6	800	50
31285052	48 - 52	1 1/2	40	M10	97	72	40	20 x 1.25	M6	800	50
31285058	54 - 58	-	-	M10	104	79	43	20 x 1.25	M6	800	50
31285064	60 - 64	2	50	M10	109	84	46	20 x 1.25	M6	800	50
31285070	66 - 70	-	-	M10	118	92	52	20 x 1.50	M6	1,000	50
31285079	75 - 79	2 1/2	65	M10	125	100	56	20 x 1.50	M6	1,000	50
31285083	80 - 83	-	-	M10	131	106	59	20 x 1.50	M6	1,000	50
31285091	88 - 91	3	80	M10	142	115	64	23 x 2.00	M6	1,800	25
31285097	92 - 98	-	-	M10	147	123	73	23 x 2.00	M6	1,800	25
31285105	100 - 105	-	-	M10	155	129	71	23 x 2.00	M6	1,800	25
31285115	108 - 115	4	100	M10	163	137	75	23 x 2.00	M6	1,800	25
31285130	125 - 130	-	-	M10	180	154	83	23 x 2.00	M6	1,800	25
31285140	133 - 140	5	125	M10	189	163	88	23 x 2.00	M6	1,800	25
31285160	152 - 160	-	-	M10	208	182	97	23 x 2.00	M6	1,800	25
31285169	165 - 169	6	150	M10	225	195	103	25 x 2.50	M8	2,500	10
31285180	176 - 180	-	-	M10	238	201	109	25 x 2.50	M8	2,500	15
31285200	192 - 200	-	-	M10	257	230	119	25 x 2.50	M8	2,500	15
31285210	205 - 210	-	-	M10	269	241	125	25 x 2.50	M8	2,500	10
31285225	219 - 225	8	200	M10	283	257	132	25 x 2.50	M8	2,500	10

