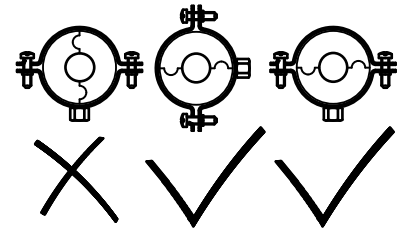
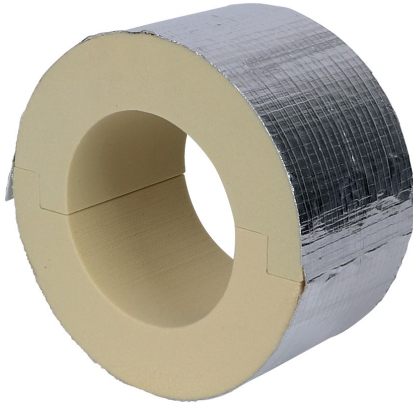


# BISOFIX® PIR50

for insulated pipes 12,0 - 406,4 mm

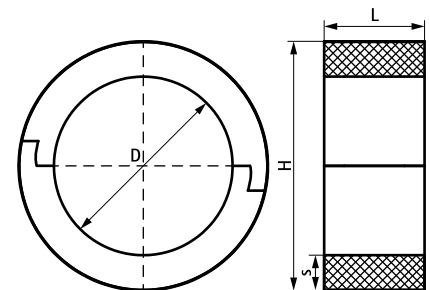
(D 03 80)



## Features and benefits

- for combination with rigid foam insulation
- cover joints with aluminium tape
- does not contain CFC, HCFC, formaldehyde or cadmium
- fire class B2
- PIR density for  $D < 110\text{mm} = 80\text{kg/m}^3$
- PIR density for  $D > 110\text{mm} = 120\text{kg/m}^3$
- thermal conductivity lambda (approx. value):  $0.30\text{ W/(mK)}$
- temperature range  $-45\text{ }^\circ\text{C} - +105\text{ }^\circ\text{C}$

Part No.	D (mm)	D (")	DN	L	H (mm)	s (mm)	F <sub>az</sub> (N)	Pack 1
I500000012	12,0	-	-	75 mm	112.0	50.0	220	25
I500000015	15,0 - 16,0	-	-	75 mm	115.0	50.0	250	25
I500000018	17,2 - 18,0	3/8	10	75 mm	118.0	50.0	300	25
I500000022	21,3 - 22,0	1/2	15	75 mm	122.0	50.0	340	25
I500000028	26,9 - 28,0	3/4	20	75 mm	128.0	50.0	350	25
I500000034	33,7 - 35,0	-	-	75 mm	135.0	50.0	370	25
I500000042	42,4	1 1/4	32	75 mm	142.4	50.0	470	25
I500000048	48,3	1 1/2	40	75 mm	148.3	50.0	500	15
I500000054	54,0	-	-	75 mm	154.0	50.0	520	15
I500000057	56,0 - 57,0	-	-	75 mm	157.0	50.0	520	15
I500000060	60,3	2	50	75 mm	160.3	50.0	540	15
I500000064	64,0	-	-	75 mm	164.0	50.0	550	15
I500000070	70,0	-	-	75 mm	170.0	50.0	600	15
I500000076	76,1	2 1/2	65	75 mm	176.1	50.0	650	15
I500000089	88,9	3	80	75 mm	188.9	50.0	690	15
I500000102	101,6	-	-	75 mm	201.6	50.0	720	5
I500000108	108,0	-	-	75 mm	208.0	50.0	760	5
I500000114	114,3	4	100	100 mm	214.3	50.0	1,680	5
I500000133	133,0	-	-	100 mm	233.0	50.0	2,780	8
I500000140	139,7	5	125	100 mm	239.7	50.0	2,860	8
I500000160	159,0 - 160,0	-	-	100 mm	260.0	50.0	3,090	8
I500000168	168,3	6	150	100 mm	268.3	50.0	3,200	8
I500000219	219,1	8	200	150 mm	319.1	50.0	4,810	2
I500000273	273,1	-	-	150 mm	373.1	50.0	5,620	2
I500000324	323,9	-	-	150 mm	424.0	50.0	6,390	2
I500000406	406,4	-	-	150 mm	506.4	50.0	6,410	2



### Complementary

- Bifix® G2 (M8/10) (BUP1000)
- 2S Clamp (M8/10)
- BIS Heavy Duty Clamp HD500 (BUP1000)

### Complementary

- BIS Heavy Duty Clamp HD500 (BUP1000)