

## BISOFIX® PIR30

for insulated pipes 12,0 - 323,9 mm

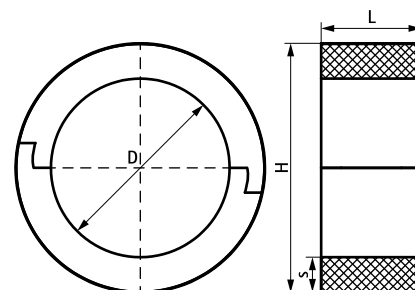
(D 03 60)



### Features and benefits

- for combination with rigid foam insulation
- cover joints with aluminium tape
- does not contain CFC, HCFC, formaldehyde or cadmium
- fire class B2
- PIR density for  $D < 110\text{mm} = 80\text{kg/m}^3$
- PIR density for  $D > 110\text{mm} = 120\text{kg/m}^3$
- thermal conductivity lambda (approx. value):  $0.30\text{ W/(mK)}$
- temperature range  $-45\text{ }^\circ\text{C} - +105\text{ }^\circ\text{C}$

Part No.	D (mm)	D (")	DN	L	H (mm)	s (mm)	F <sub>bz</sub> (N)	Pack 1
I300000012	12,0	-	-	75 mm	72.0	30.0	130	25
I300000015	15,0 - 16,0	-	-	75 mm	75.0	30.0	170	25
I300000018	17,2 - 18,0	3/8	10	75 mm	78.0	30.0	190	25
I300000022	21,3 - 22,0	1/2	15	75 mm	82.0	30.0	230	25
I300000034	33,7 - 35,0	-	-	75 mm	95.0	30.0	320	25
I300000042	42,4	1 1/4	32	75 mm	102.4	30.0	350	25
I300000048	48,3	1 1/2	40	75 mm	108.3	30.0	370	25
I300000054	54,0	-	-	75 mm	114.0	30.0	380	25
I300000057	56,0 - 57,0	-	-	75 mm	117.0	30.0	390	25
I300000060	60,3	2	50	75 mm	120.3	30.0	410	25
I300000064	64,0	-	-	75 mm	124.0	30.0	420	25
I300000070	70,0	-	-	75 mm	130.0	30.0	440	25
I300000076	76,1	2 1/2	65	75 mm	136.1	30.0	460	25
I300000089	88,9	3	80	75 mm	148.9	30.0	500	15
I300000102	101,6	-	-	75 mm	161.6	30.0	550	15
I300000108	108,0	-	-	75 mm	168.0	30.0	620	15
I300000114	114,3	4	100	100 mm	174.3	30.0	1,370	15
I300000133	133,0	-	-	100 mm	193.0	30.0	1,520	5
I300000140	139,7	5	125	100 mm	199.7	30.0	1,570	5
I300000160	159,0 - 160,0	-	-	100 mm	220.0	30.0	1,720	5
I300000168	168,3	6	150	100 mm	228.3	30.0	2,720	8
I300000219	219,1	8	200	150 mm	279.1	30.0	4,210	2
I300000273	273,1	-	-	150 mm	333.0	30.0	5,020	2
I300000324	323,9	-	-	150 mm	384.0	30.0	5,790	2



### Complementary

Bifix® G2 (M8/10) (BUP1000)  
2S Clamp (M8/10)  
BIS Heavy Duty Clamp HD500 (BUP1000)

### Complementary

BIS Heavy Duty Clamp HD500 (BUP1000)