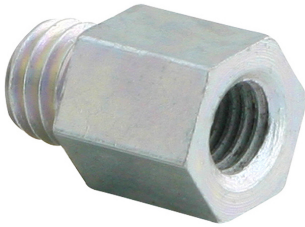


# BIS Thread Adaptor (M/F)

adjustment of thread connection

(K 55 35)



6473XXX

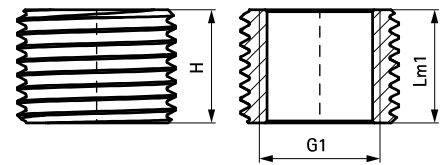
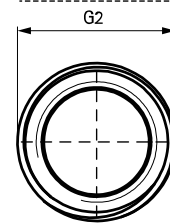
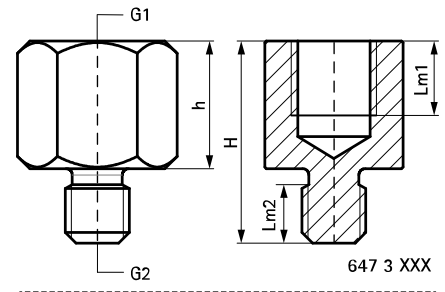
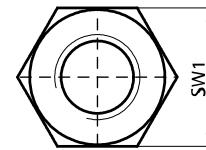
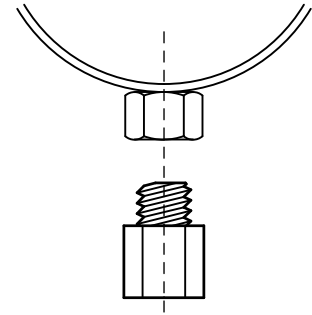


6473521  
6484321

## Features and benefits

- to enlarge or reduce the thread size in the connection of clamps, etc.
- material: steel
- zinc plated

Part No.	H (mm)	h (mm)	G1	G2	Lm1 (mm)	Lm2 (mm)	SW1 (mm)	Pack 1	Pack 2
6473008	19	12	M8	M6	7.0	5.5	13	100	1,000
6473206	20	12	M6	M8	7.0	6.0	13	100	1,000
6473210	23	15	M10	M8	9.0	6.0	13	100	1,000
6473212	23	15	M12	M8	8.0	6.0	17	50	500
6473221	30	22	G1/2	M8	13.0	8.0	27	50	250
6473306	21	13	M6	M10	7.0	6.0	13	100	1,000
6473308	21	13	M8	M10	7.0	6.0	13	100	1,000
6473312	25	15	M12	M10	8.0	8.0	17	50	500
6473316	32	22	M16	M10	13.0	8.0	24	25	250
6473321	31	21	G1/2	M10	12.0	8.0	27	25	250
6473408	23	13	M8	M12	7.0	7.5	13	50	1,000
6473410	23	13	M10	M12	8.0	7.5	13	50	1,000
6473416	32	22	M16	M12	11.0	8.0	24	50	250
6473510	32	18	M10	M16	9.0	11.0	19	50	250
6473512	32	18	M12	M16	10.0	11.0	19	50	250
6473421	26	11	M10	G1/2	9.0	13.0	27	25	125
6473521	15	-	M16	G1/2	15.0	-	-	100	1,000
6473621	25	15	G3/4	G1/2	12.0	7.0	-	25	250
6473721	32	20	G1	G1/2	17.0	9.0	-	10	100



647 3 521 /  
648 4 321