

BIS Pipe Saddle (hdg)

(B 30 10)

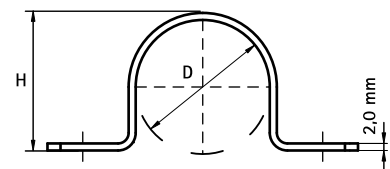
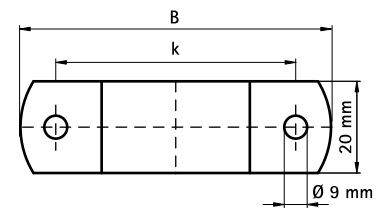
for steel pipes 21,5 - 60,3 mm



Features and benefits

- one-part saddle
- hot dip galvanized
- material: steel

Part No.	D (mm)	D (")	DN	B (mm)	H (mm)	k (mm)	F _{a,z} (N)	Pack 1
4601021	21,5	1/2	15	70	23	50	3,500	50
4601027	26,9	3/4	20	78	28	58	3,500	50
4601033	33,7	1	25	82	34	62	3,500	50
4601043	42,5	1 1/4	32	92	44	72	3,500	50
4601048	48,0	1 1/2	40	97	47	77	3,500	50
4601061	60,3	2	50	108	58	88	3,500	50



Complementary
Walraven Fastenings

Alternative
BIS Industrial Saddle