

# BIS Expansion Guide Assembly (BUP1000)

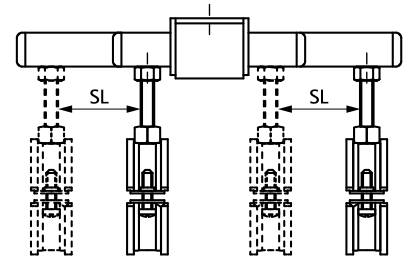
(E 10 40)

fixing with sliding assemblies



666 8 612

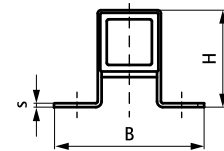
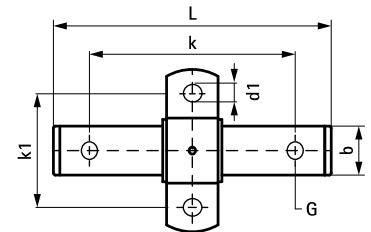
666 8 813



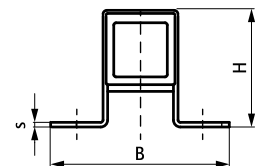
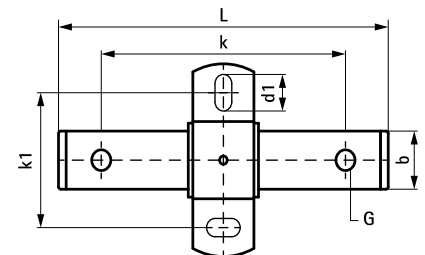
## Features and benefits

- stable and safe double support for pipe expansion
- fix directly on the building structure or in combination with rail systems
- suitable for ceiling mounting (suspended) and floor mounting (standing mounted)
- tapped with different sized threads on opposing faces
- a variety of connection possibilities, can be combined with Bifix® G2 or HD1501 Pipe Clamps
- material: metal parts made of steel; plastic parts made of PE
- surface protection:
  - product is part of the Walraven BIS UltraProtect® 1000 system
  - suitable for in- and outdoor applications
  - stands min. 1,000 hours salt spray test (max. 5% red rust) according to ISO 9227

Part No.	Type	G	L	B	H	b	s	d1	k	k1	SL (max.)	F <sub>a,z</sub> (N)	Pack 1
				(mm)	(mm)	(mm)	(mm)	(mm)	(mm)	(mm)	(mm)		
6668612	FG2	M10/12	170 mm	135	46	35	3.0	∅ 13	120	100	60	1,500	5
6668813	FG3	∅ 13.0 mm / 17.0 mm	255 mm	146	90	40	5.0	20 x 13	200	100	120	7,500	5



666 8 612



666 8 813

## Complementary

Walraven Stud Bolt  
Walraven Threaded Rod  
WTB1 Throughbolt Anchor

## Alternative

BIS Expansion Device (BUP1000)